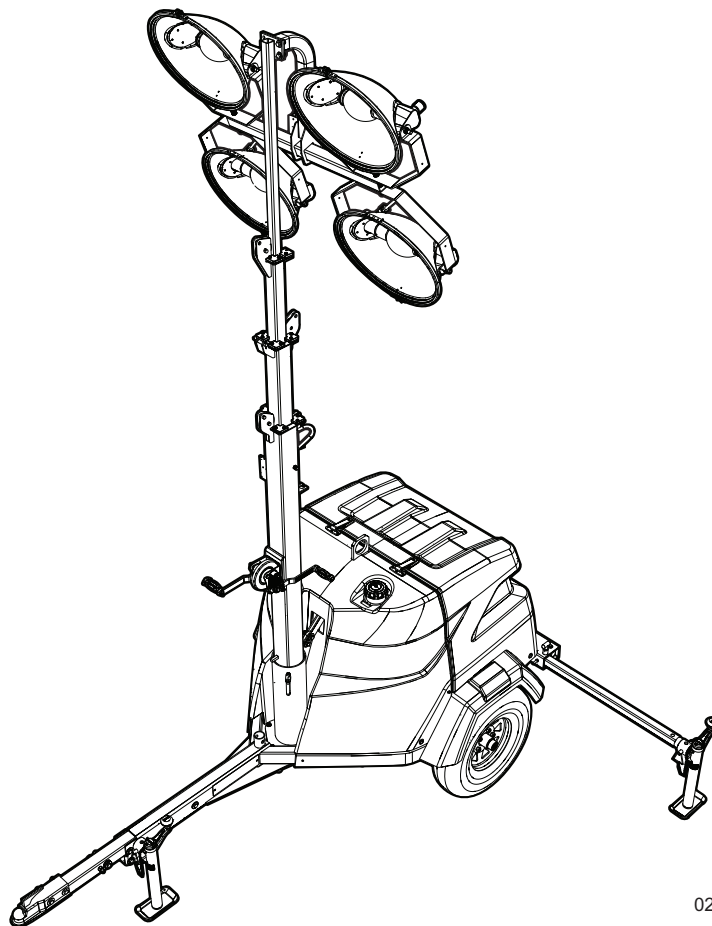


GENERAC® | MAGNUM

LIGHT TOWER MLT6SM • MLT6SK • MLT8SK



02113

PARTS MANUAL

⚠ WARNING

CALIFORNIA PROPOSITION 65 WARNING: Engine exhaust and some of its constituents are known to the state of California to cause cancer, birth defects, and other reproductive harm.

⚠ WARNING

CALIFORNIA PROPOSITION 65 WARNING: Diesel engine exhaust and some of its constituents are known to the state of California to cause cancer, birth defects, and other reproductive harm.

⚠ WARNING

ENVIRONMENTAL HAZARD: Always recycle batteries at an official recycling center in accordance with all local laws and regulations. Failure to do so could result in environmental damage, death or serious injury.

Introduction

This parts manual was prepared based on the information available at the time of publication and is subject to change without notice. Generac Mobile Products reserves the right to change parts at any time. To check whether a revised parts manual is available, contact Generac Mobile Products.

DO NOT MODIFY or use this equipment for any application other than which it was designed for. To keep your equipment fully operational, it is suggested you maintain a stock of commonly used maintenance or service parts. A recommended spare parts list can be found in the back of this manual. To order service parts, please go to www.generacmobileproducts.com or call Generac Mobile Products.

▲ WARNING

Before operating or servicing this equipment, read and understand the Generac Mobile Products Operating Manual which was included with the unit when shipped from the factory. Failure to do so increases the risk of injury to yourself or others.

GENERAC MOBILE PRODUCTS LLC

215 Power Drive • Berlin, WI 54923 U.S.A.

Phone: 920-361-4442

FAX: 920-361-4416

Toll Free: 1-800-926-9768

www.generacmobileproducts.com

For technical or parts QUESTIONS, please contact the Generac Mobile Products Technical Service team at 1-800-926-9768.

Engine Make: _____

Engine Serial Number: _____

Engine Model Number: _____

Generator Make: _____

Generator Model Number: _____

Generator Serial Number: _____

Unit Model Number: _____

Unit Serial Number: _____

This Page Intentionally Left Blank

Table of Contents

Introduction	iii
Parts Manual Instructions.....	1
Unit Decals - Front, Rear and Top.....	2
Unit Decals - Left and Right Sides.....	4
Unit Decals - Inside Unit.....	6
Light Assembly	8
Mast Junction Box Assembly - Hard wired Lights	10
Mast Assembly - Manual Winch	12
Mast Assembly - Electric Winch Option.....	14
Enclosure Assembly (1 of 2).....	16
Enclosure Assembly (2 of 2).....	18
Control Box assembly - MLT6SM, MLT6SK.....	20
Control Box Assembly - MLT8SK	22
Cooling System Assembly.....	24
Engine Assembly - Mitsubishi (1 of 2)	26
Engine Assembly - Mitsubishi (2 of 2)	28
Engine Assembly - Kubota (1 of 2).....	30
Engine Assembly - Kubota (2 of 2).....	32
Generator Assembly.....	34
Components To trailer assembly.....	36
Trailer Assembly.....	38
Axle Assembly	40

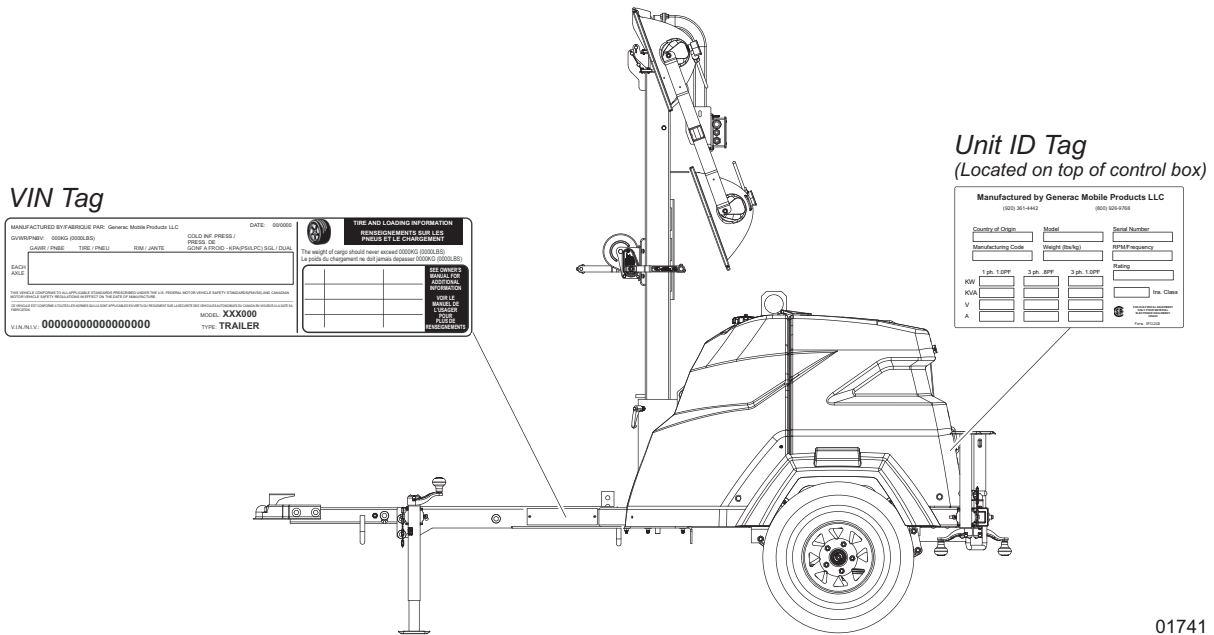
This Page Intentionally Left Blank

Parts Manual Instructions

Product illustrations are only representations. Products supplied may vary from the illustrations in this parts manual. Parts not shown in the illustration are indicated by a double dash (--) in the item column.

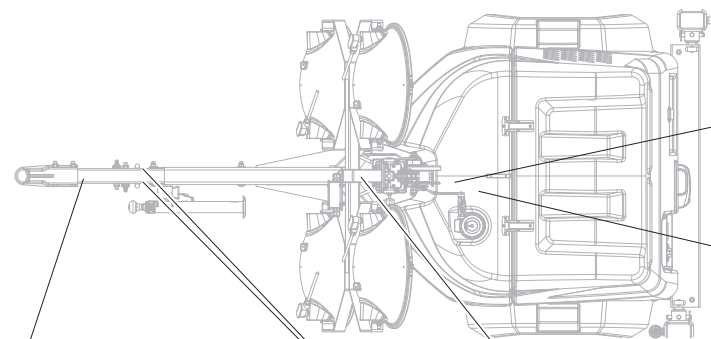
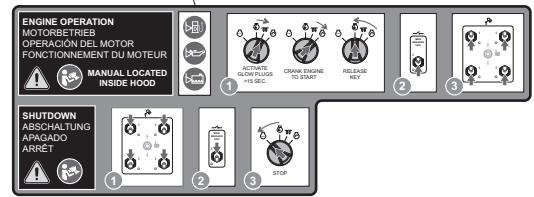
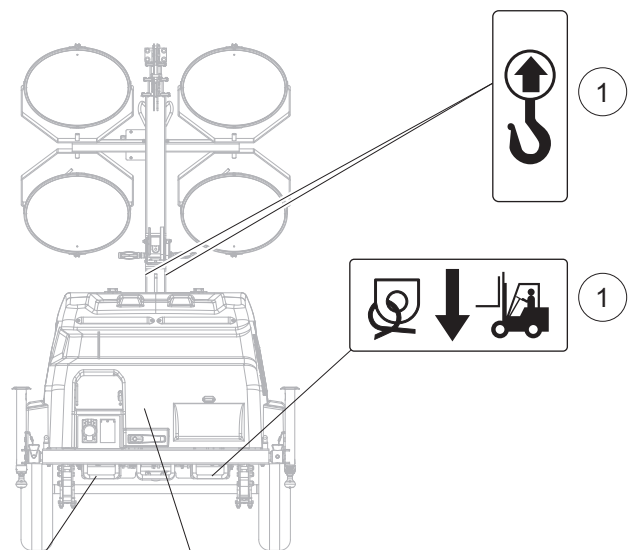
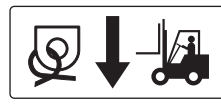
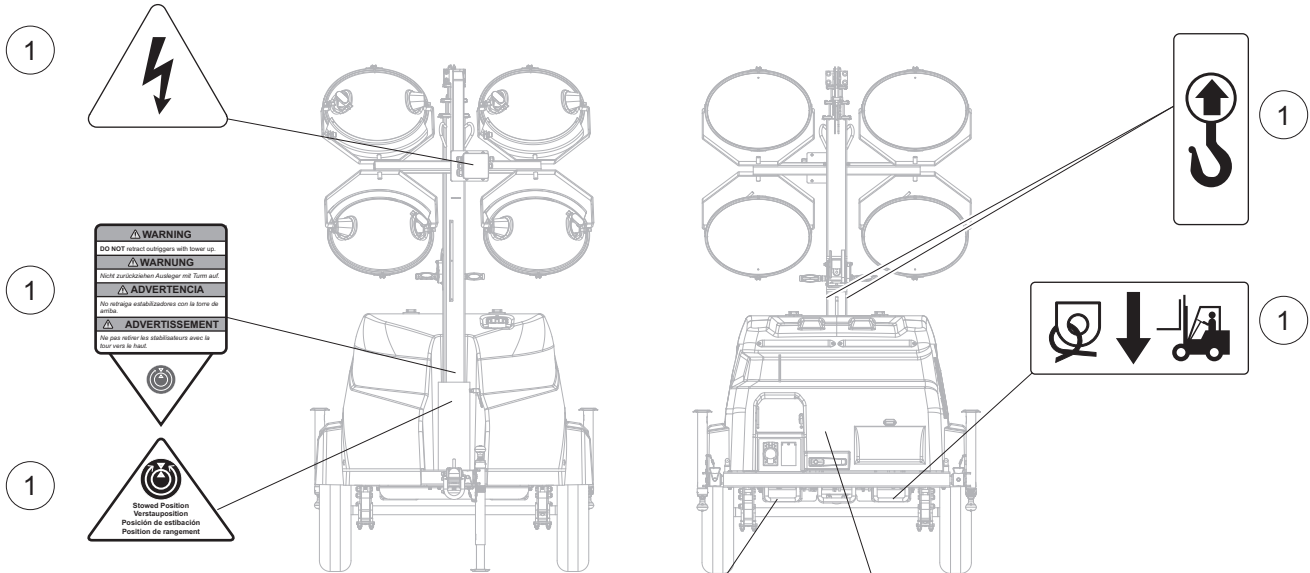
Please be prepared to provide the following information when ordering replacement parts: model number, serial number (on unit serial tag), part number, purchase order number (if applicable), shipping address, shipping method.

Refer to the illustration below to locate the unit ID tag and Vehicle Identification Number (VIN) tag on the unit. Important information, such as the unit serial number, model number, VIN and tire loading information are found on these tags. Record the information from these tags so it is available if the tags are lost or damaged. When ordering parts or requesting assistance, you may be asked to provide this information.



01741

UNIT DECALS - FRONT, REAR AND TOP



TOWING INSTRUCTIONS	ABSCHLEPPANWEISUNGEN	INSTRUCCIONES PARA REMOLQUE	INSTRUCTIONS DE REMORQUAGE
<ol style="list-style-type: none"> Read operator's manual. Use hitch rated for trailer's "gross vehicle weight rating". Securely attach trailer to tow vehicle. Attach safety chains using a cross pattern. Check brakes when towed. Check trailer lights. 	<ol style="list-style-type: none"> Gelesenheitsbuch lesen. Anhängervereinigung verwenden, die der Gesamtantriebsgeschwindigkeit des Fahrzeug entspricht. Anhänger sicher an. Sicherheitsketten befestigen. Sicherheitsketten über Kreuz anbringen. Anhängerleuchten prüfen. 	<ol style="list-style-type: none"> Leer el manual del operador. Use un enganche adecuado para la "capacidad de peso bruto del vehículo" del remolque. Segure el remolque al vehículo de remolque. Espere las cadenas de seguridad en forma cruzada. Verifique la cadena de seguridad para avanzar. Encienda las luces del remolque. 	<ol style="list-style-type: none"> Lisez le manuel de l'opérateur. Utiliser un étrépage convenant au poids nominal du poids bruto du véhicule" du remorque. Attacher solidement le remorque au véhicule tracteur. Poser les chaînes de sécurité en les croisant. Vérifier la chaîne de remorque en avance. Vérifier les feux de la remorque.



1

1

1

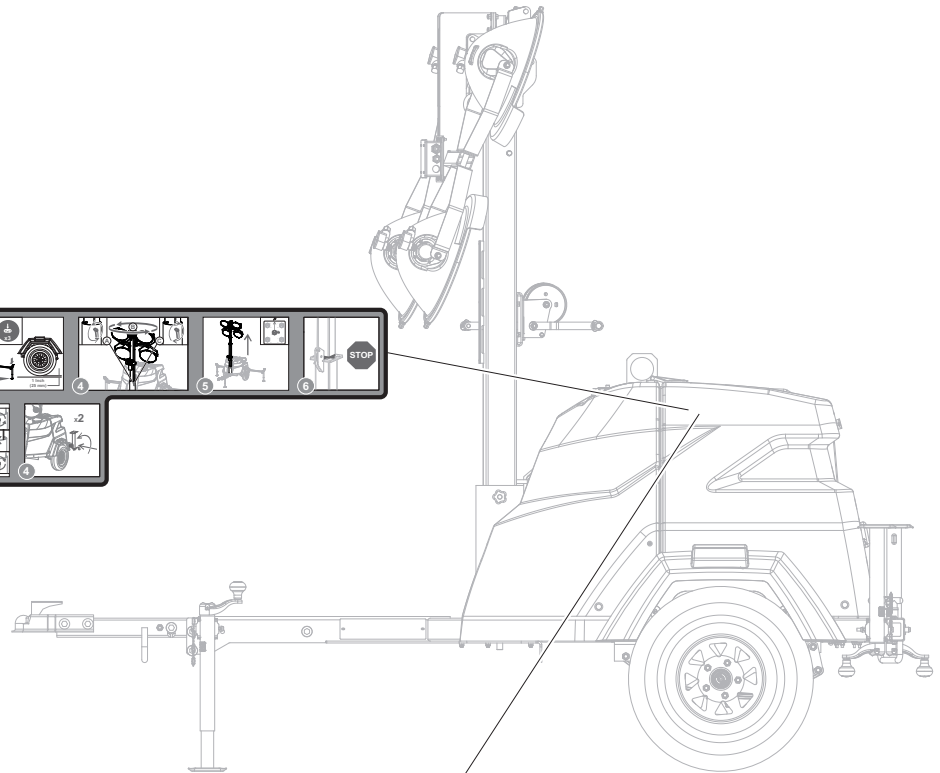
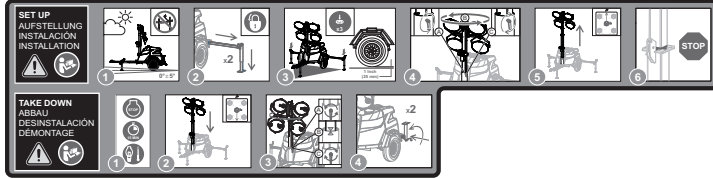
01403

UNIT DECALS - FRONT, REAR AND TOP

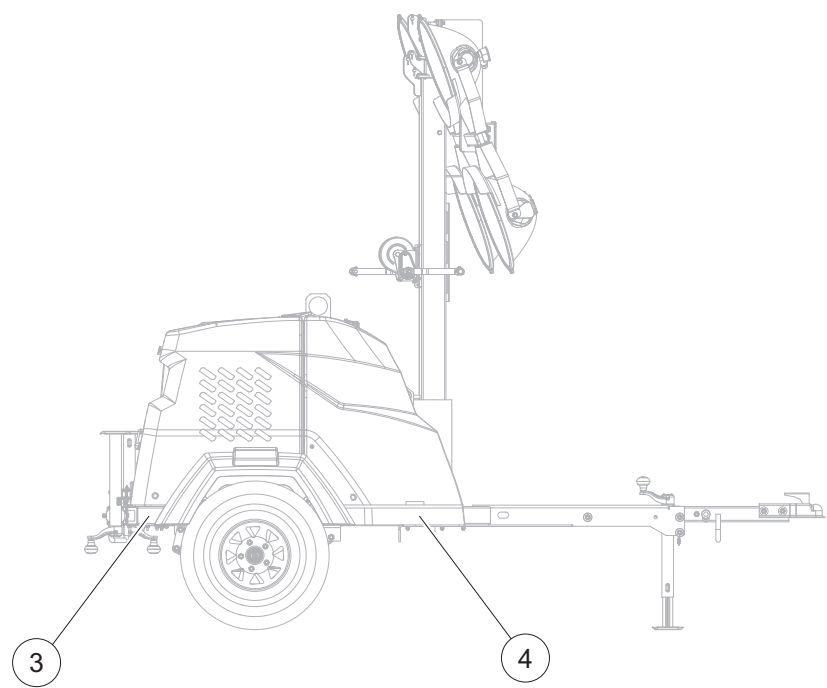
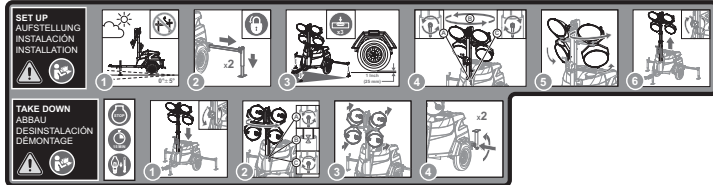
Item	Part No.	Qty	Description	Notes
1	17979	1	Decal, safety MLT6/8S	
2	17980	1	Decal, operation MLT6/8S (manual)	

UNIT DECALS - LEFT AND RIGHT SIDES

1



2

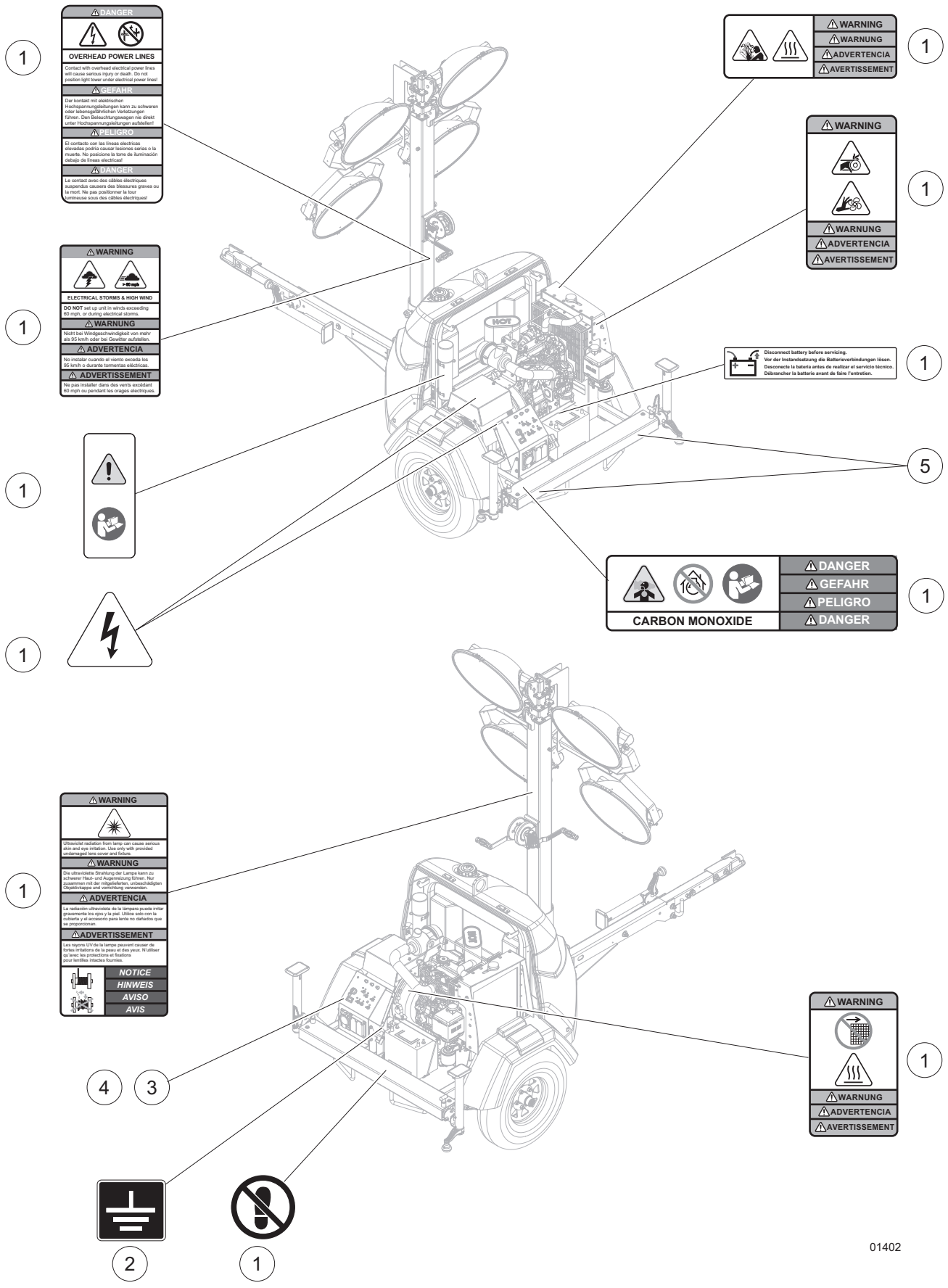


01389

UNIT DECALS - LEFT AND RIGHT SIDES

Item	Part No.	Qty	Description	Notes
1	70096	1	Decal, operation MLT6/8S (electric)	
2	17980	1	Decal, operation MLT6/8S (manual)	
3	72149	1	Reflector, red (4.25 in x .75 in)	Set of two
4	72150	1	Reflector, yellow (4.25 in x .75 in)	Set of two

UNIT DECALS - INSIDE UNIT



⚠ DANGER

OVERHEAD POWER LINES

Contact with overhead electrical power lines will cause serious injury or death. Do not position light tower under electrical power lines!

⚠ GEFAHR

Der Kontakt mit elektrischen Hochspannungsleitungen kann zu schweren Verletzungen oder dem Tod führen. Die Beleuchtungsmast nie direkt unter Hochspannungsleitungen positionieren!

⚠ PELIGRO

El contacto con las líneas eléctricas elevadas podría causar lesiones serias o la muerte. No posicione la torre de iluminación debajo de líneas eléctricas!

⚠ DANGER

En contact avec des câbles électriques suspendus pourrait des blessures graves ou la mort. Ne pas positionner la tour lumineuse sous des câbles électriques!

⚠ WARNING

⚠ WARNING

⚠ ADVERTENCIA

⚠ AVERTISSEMENT

⚠ WARNING

ELECTRICAL STORMS & HIGH WIND

DO NOT use unit in storms exceeding 60 mph, or during electrical storms.

⚠ WARNING

Nicht bei Windgeschwindigkeit von mehr als 95 km/h oder bei Gewittern aufstellen.

⚠ ADVERTENCIA

No instalar cuando el viento exceda los 95 km/h o durante tormentas eléctricas.

⚠ AVERTISSEMENT

Ne pas installer dans des vents excedant 95 mph ou pendant les orages électriques.

⚠ WARNING

⚠ WARNING

⚠ ADVERTENCIA

⚠ AVERTISSEMENT

⚠

⚠

⚠ Disconnect battery before servicing.

Vor der Instandsetzung die Batterieverbindungen lösen.

Desconnecte la batería antes de realizar el servicio técnico.

Déconnecter la batterie avant de faire l'entretien.

⚡

⚠ DANGER

⚠ GEFAHR

⚠ PELIGRO

⚠ DANGER

CARBON MONOXIDE

⚠ WARNING

⚠

Ultraviolet radiation from lamps can cause serious skin and eye irritation. Use only with provided protective eyewear.

⚠ WARNING

Die ultraviolette Bestrahlung der Lampe kann zu schweren Haut- und Augenreizung führen. Nur zusammen mit der mitgelieferten, entsprechenden Schutzbrille verwenden.

⚠ ADVERTENCIA

La radiación ultravioleta de la lámpara puede irritar gravemente la piel y los ojos. Útilice solo con la gafas y el accesorio para los ojos no defectuosos que se proporcionan.

⚠ AVERTISSEMENT

Les rayons UV de la lampe peuvent causer de fortes irritations de la peau et des yeux. N'utiliser qu'avec les protections et lunettes pour lunettes fournies.

NOTICE

HINWEIS

AVISO

AVIS

⚠ WARNING

⚠

⚠

⚠ WARNING

⚠ ADVERTENCIA

⚠ AVERTISSEMENT

⚠

⚠

2

⚠

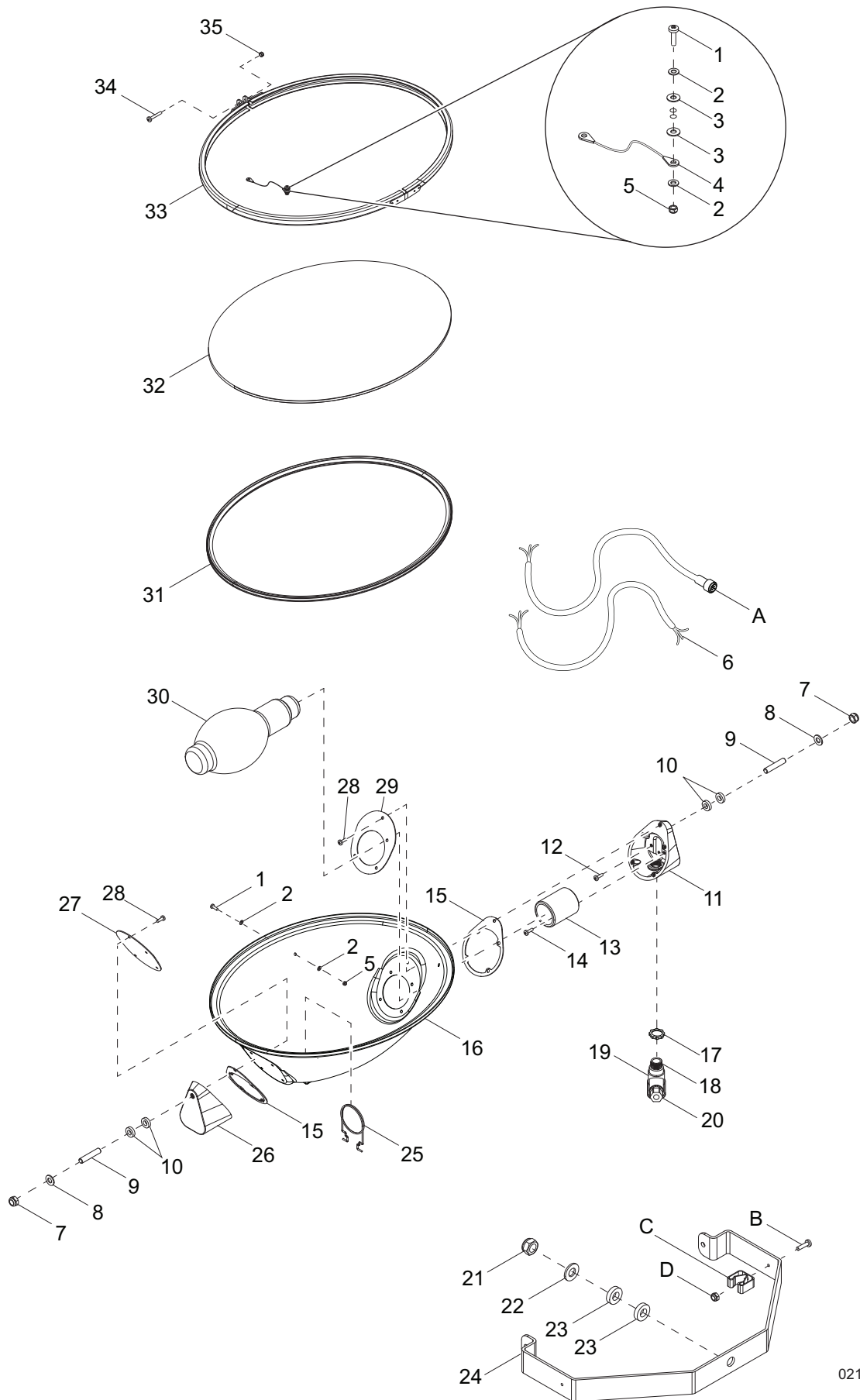
1

01402

UNIT DECALS - INSIDE UNIT

Item	Part No.	Qty	Description	Notes
1	17979	1	Decal, safety MLT6/8S	
2	12142	1	Decal, ground	
3	17987	1	Decal, control panel MLT 8SK	
4	17986	1	Decal, control panel MLT 6SK-M	
5	72132	1	Reflector, rear 2.0 x 2.0 - red	Set of two

LIGHT ASSEMBLY



02114

LIGHT ASSEMBLY - OVAL

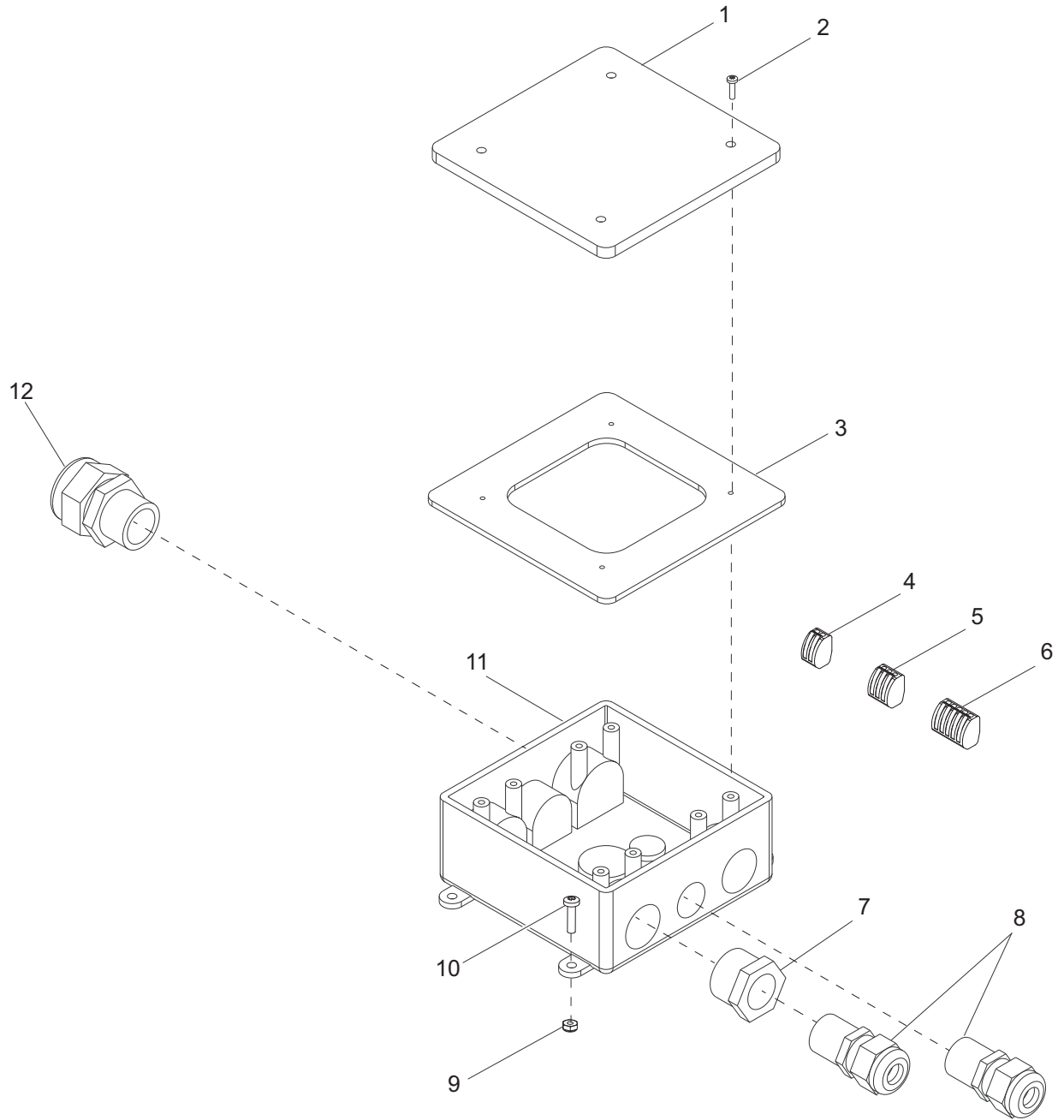
Item	Part No.	Qty	Description	Notes
1	13399	2	Screw, M4x18 pan phil	
2	60067	4	Washer, #10 flat .435/.060, SS	
3	13372	2	Washer, #4 nylon	
4	13370	1	Assembly, tether	
5	60051	2	Nut, M4-.70 nylock, G8.8	
6	13438	1	Cord, power hard wired	
7	62221	2	Nut, .500-13 nylock, G5	
8	60309	2	Washer, .500 flat 1.060/.090	
9	13392	2	Stud, trunnion	
10	13390	4	Washer, .500 nylon	
11	13375	1	Support, housing/trunnion w/cord	
12	13393	1	Screw, M5x12 phillips green	
13	13381	1	Socket, bulb	
14	60694	2	Screw, 8-32x.750 pan phil, SS	
15	13378	2	Gasket, silicone	
16	13366	1	Housing	
17	15861	1	Nut, special, .500NPT lock	
18	13386	1	Fitting, nipple - .500	
19	13387	1	Connector, weather tight	
20	15864	1	Strain relief, .500NPT watertight, .270/.464 ID	
21	60584	1	Nut, .750-10 nylock, G5	
22	60247	1	Washer, .750 flat 2.020/.130	
23	63357	2	Washer, .750 flat 2.0/.062, plastic	
24	13368	1	Trunnion	
25	13892	1	Support, bulb	
26	13374	1	Support, housing/trunnion w/out cord	
27	13377	1	Bracket, end plate	
28	13388	10	Screw, M5x12 slotted hex w/flange	
29	13376	1	Bracket, socket end plate	
30	11391	1	Bulb, 1000W MH short length	
31	13373	1	Gasket, lens oval	
32	13369	1	Lens, glass oval	
33	13367	1	Assembly, aluminum ring	
34	60167	1	Screw, M5-.80x35 pan phil, G4.8	
35	60038	1	Nut, M5-.80 nylock	
--	13311	4	Assembly, light fixture - 1000W hard wired	Items 1-35

OPTIONAL FEATURES

Quick Disconnect:

A	13383	1	Cord, power quick disconnect	Replaces item 6
B	60398	1	Screw, 10-32x.500 pan phil, SS	
C	19041	1	Clip, spring holder	
D	60061	1	Nut, 10-32 nylock, G5	
--	13601	4	Assembly, light fixture/QD cord clip	

MAST JUNCTION BOX ASSEMBLY - HARD WIRED LIGHTS

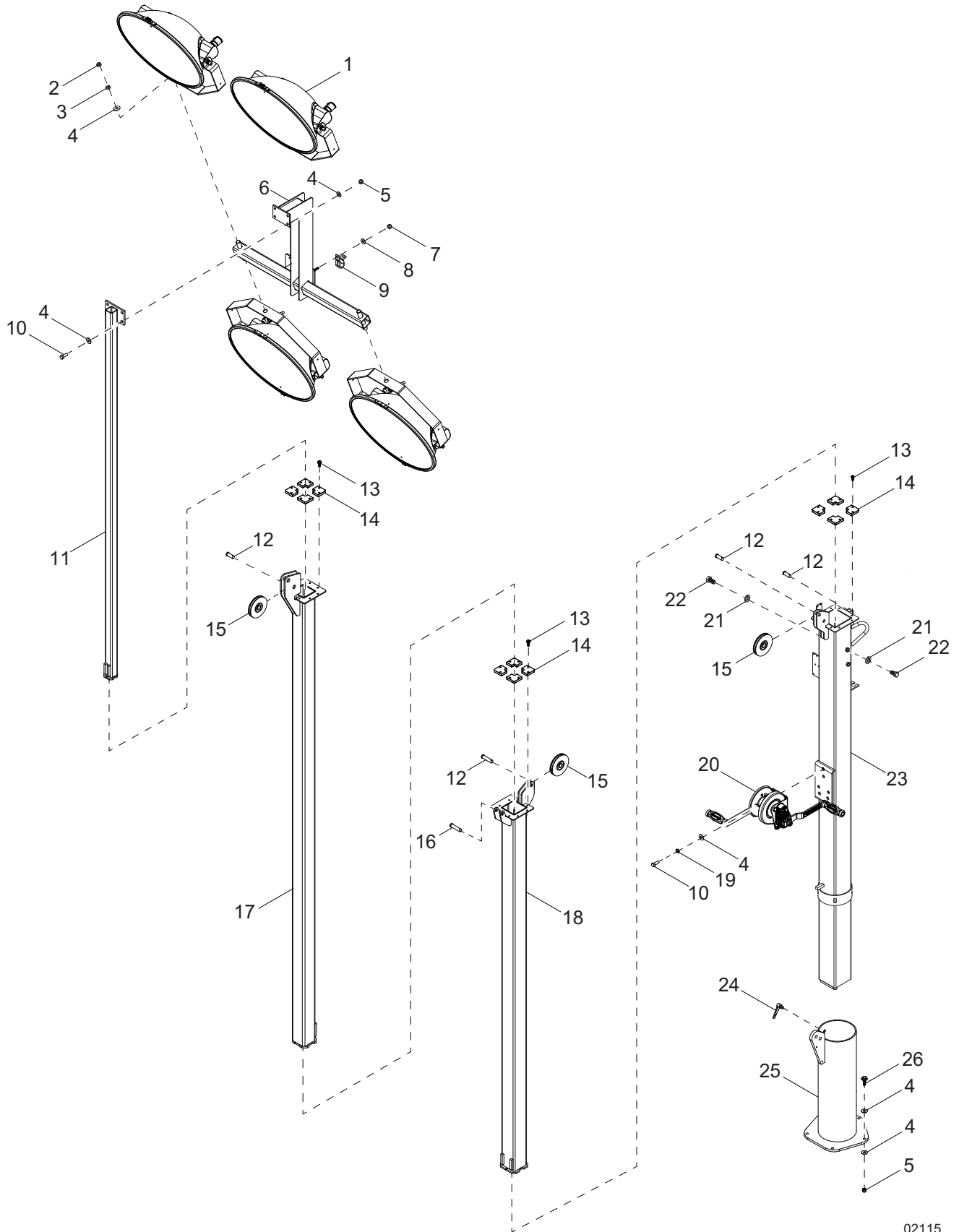


00866

MAST JUNCTION BOX ASSEMBLY - HARD WIRED LIGHTS

Item	Part No.	Qty	Description	Notes
1	12109	1	Cover, box, 2-gang plastic	
2	60424	4	Screw, 6-32x.750 pan phil, G2	
3	13749	1	Gasket, junction box - HFI 281000	
4	66100	4	Connector, 2 pos.	
5	66101	2	Connector, 3 pos.	
6	66102	1	Connector, 5 pos.	
7	60755	2	Fitting, strt .750MNPT x .500FNPT, nylon	
8	15864	4	Strain relief, .500NPT water tight	
9	60415	4	Nut, 10-32 nylock, SS	
10	60062	4	Screw, 10-32x.750 pan phil, G2	
11	12094	1	Box, junction	
12	14656	1	Strain relief, .750NPT water tight	

MAST ASSEMBLY - MANUAL WINCH

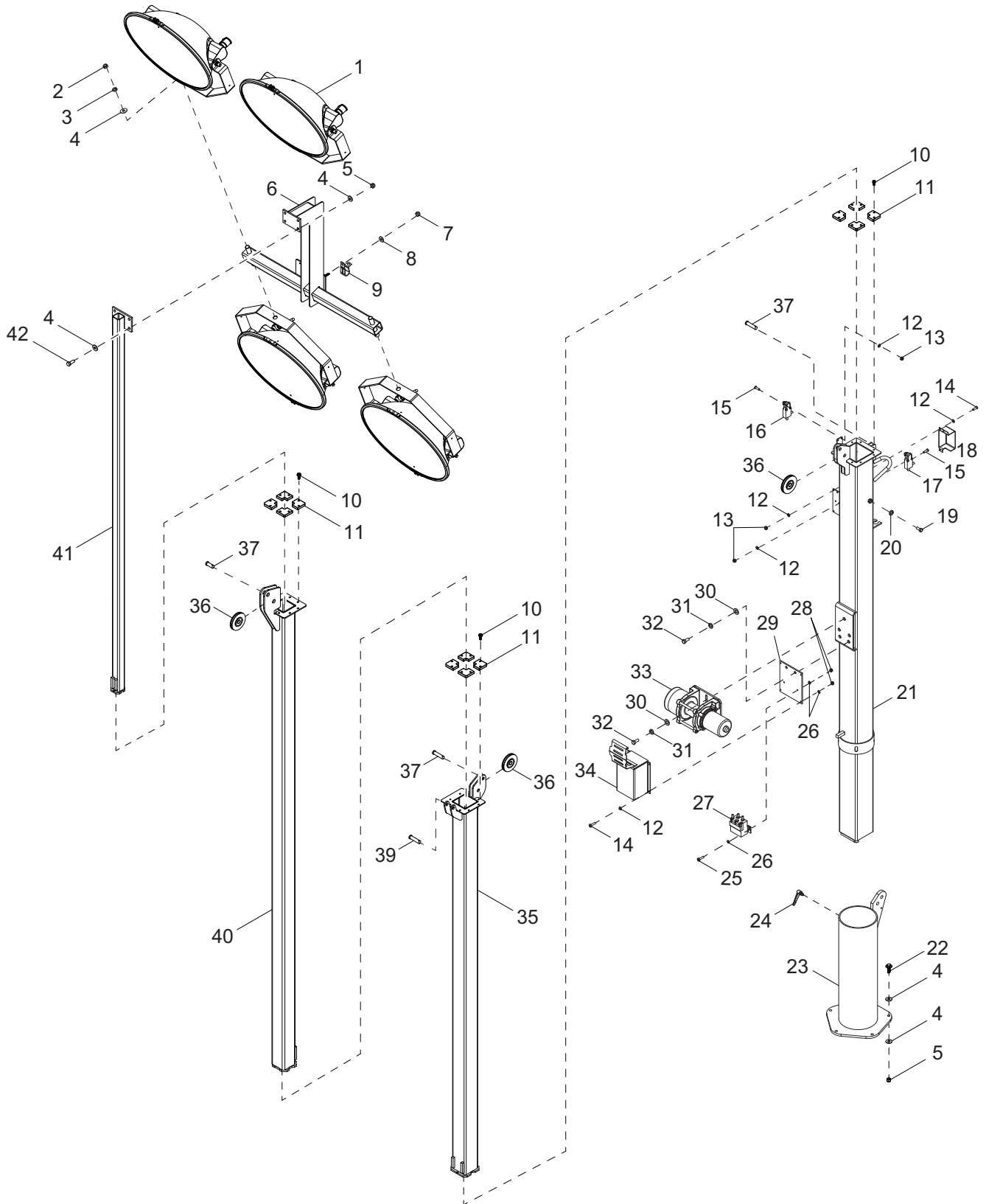


02115

MAST ASSEMBLY - MANUAL WINCH

Item	Part No.	Qty	Description	Notes
1	Page 8	4	Assembly, light fixture	
2	60584	4	Nut, .750-10 nylock, G5	
3	60247	4	Washer, .750 flat 2.020/.130	
4	60386	22	Washer, .375 flat .993/.064	
5	60358	9	Nut, .375-16 nylock, G5	
6	43201B	1	Weldment, mast crossbar	
7	60144	1	Nut, .250-20 nylock, G5	
8	60243	1	Washer, .250 flat .735/.060	
9	16143	1	Clamp, tubing .500	
10	60205	4	Screw, .375-16x1.0 std hex, G5	
11	31264B	1	Weldment, mast - 1.50	
12	63325	6	Pin, clevis - .500 dia. x 1.063 UL, ZP	
13	63358	24	Screw, .250-20x.625 hex wash thread rolling	
14	31225	12	Guide	
15	33736	3	Assy, pulley vertical mast	
16	35655	1	Pin, clevis-.500 dia. x 1.75 ZP	
17	31261B	1	Weldment, mast 2.25 in	
18	37465B	1	Weldment, mast 3 in	
19	60206	3	Washer, .375 split lock	
20	72127	1	Winch, manual - 1500 lb. dual handle	
21	60703	2	Washer, .375 split lock, SS	
22	62269	2	Screw .375-16X.75 std hex, SS	
23	37462B	1	Weldment, mast - 4 in	
24	36978	1	Handle, adjustable, 5/16 in. - 18 x .75 in	
25	31218B	1	Weldment, mast rotation tub	
26	60139	5	Screw, .375-16x1.500 std hex, G5	
--	31247	1	Cable, .188 in x 144 in w/ball swedge (bottom)	
--	31277	1	Cable, .188 in x 78 in w/ball swedge (top)	
--	31248	1	Cable, .188 in x 79.75 in w/ball swedge (middle)	

MAST ASSEMBLY - ELECTRIC WINCH OPTION

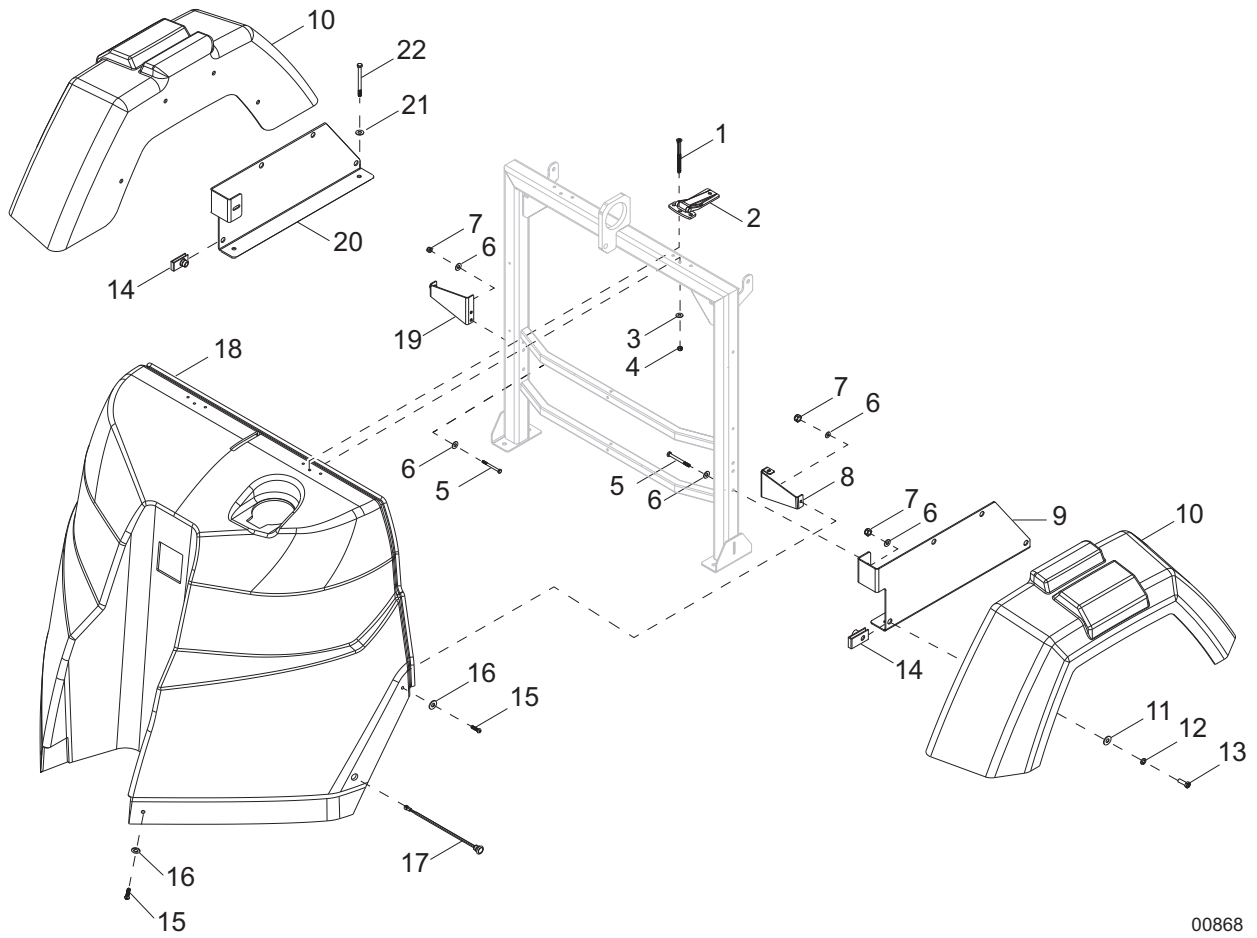


01368

MAST ASSEMBLY - ELECTRIC WINCH OPTION

Item	Part No.	Qty	Description	Notes
1	Page 8	4	Assembly, light fixture	
2	60584	4	Nut, .750-10 nylock, G5	
3	60247	4	Washer, .750 flat 2.020/.130	
4	60386	22	Washer, .375 flat .993/.064	
5	60358	9	Nut, .375-16 nylock, G5	
6	43201B	1	Weldment, mast crossbar	
7	60144	1	Nut, .250-20 nylock, G5	
8	60243	1	Washer, .250 flat .735/.060	
9	16143	1	Clamp, tubing .500	
10	63358	24	Screw, .250-20x.625 hex wash thread rolling	
11	31225	12	Guide	
12	60269	14	Washer, #8 flat .433/.036	
13	60270	9	Nut, nylock class 6	
14	60244	5	Screw, 8-32x1.0 pan phil	
15	67190	4	Screw, 8-32x1.25 soc hex	
16	31739	1	Assembly, up stop switch, limit	
17	31740	1	Assembly, down stop switch, limit	
18	37205B	1	Cover, up limit switch	
19	62269	2	Screw .375-16X.75 std hex, SS	
20	60703	2	Washer, .375 split lock, SS	
21	37462B	1	Weldment, mast - 4 in	
22	60352	5	Screw, .375-16x1.250 std hex, G5	
23	31218B	1	Weldment, mast rotation tub	
24	36978	1	Handle, adjustable, 5/16 in. - 18 x .75 in	
25	60850	4	Screw, 10-24x.75 pan phil G2	
26	60237	8	Washer, #10 flat .495/.036 SAE	
27	11293	1	Contacto, 12V electric winch	
28	60457	4	Nut, 10-24 nylock G2	
29	37207B	1	Plate, contactor bolt	
30	60386	5	Washer, .375 flat .993/.064	
31	60206	5	Washer, .375 split lock hardened	
32	60205	5	Screw, .375-16x1.0 std hex G5	
33	12874	1	Winch, electric-770lb hoist	
34	37468B	1	Winch cover	
35	37465B	1	Weldment, mast 3 in	
36	33736	3	Assy, pulley vertical mast	
37	63325	5	Pin, clevis - .500 dia. x 1.063 UL, ZP	
38	35655	1	Pin, clevis-.500 dia. x 1.75 ZP	
39	31261B	1	Weldment, mast 2.25 in	
40	31264B	1	Weldment, mast - 1.50	
41	60205	4	Screw, .375-16x1.0 std hex, G5	
--	31247	1	Cable, .188 in x 144 in w/ball swedge (bottom)	
--	31277	1	Cable, .188 in x 78 in w/ball swedge (top)	
--	31248	1	Cable, .188 in x 79.75 in w/ball swedge (middle)	

ENCLOSURE ASSEMBLY (1 OF 2)

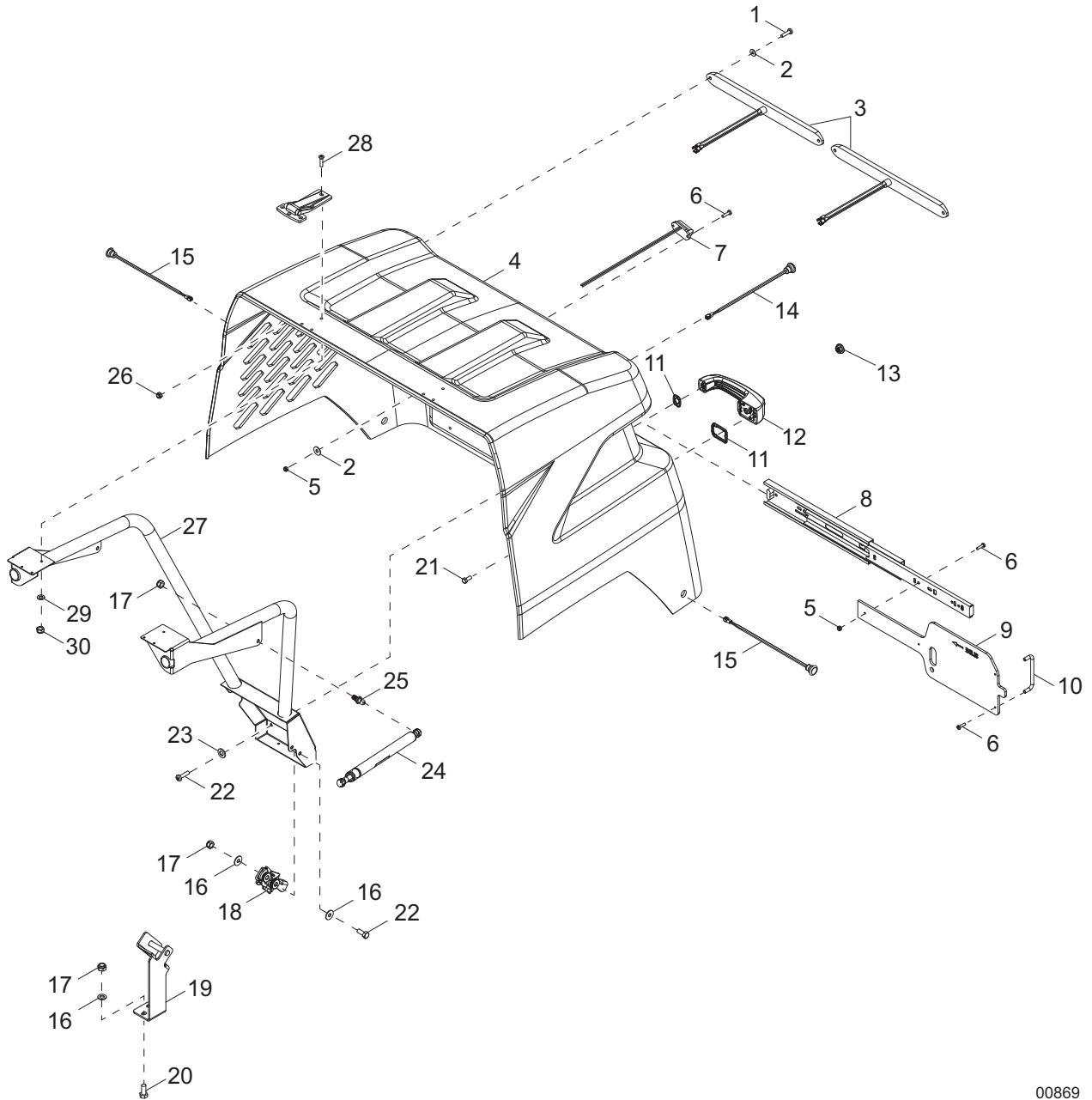


00868

ENCLOSURE ASSEMBLY (1 OF 2)

Item	Part No.	Qty	Description	Notes
1	35282	6	Screw, 10-24x3.0 flat head phil, SS	
2	35136	2	Hinge, flush mount	
3	60237	12	Washer, #10 flat .495/.036	
4	60457	12	Nut, M6-1.0 weld, class 5	
5	61234	6	Screw, .250-20X2.750 std hex, G5	
6	60243	12	Washer, .250 flat .735/.060	
7	60144	8	Nut, .250-20 nylock, G5	
8	31496	1	Bracket, enclosure - LH	
9	35141B	1	Bracket, mounting fender - left	
10	17982	2	Fender, plastic, 13 in. wheel	
11	60386	8	Washer, .375 flat .993/.064	
12	60271	8	Washer, .312 split lock	
13	60028	8	Screw, .312-18x1.0 std hex, G5	
14	62086	8	Nut, .312-18 U-clip - short type	
15	68070	4	Screw, .250-20x1.00 button hex, SS	
16	60696	6	Washer, .250 flat .625/.050, SS	
17	36961	2	Assembly, amber side marker light	
18	52750W	1	Enclosure, front cover	
19	37430B	2	Bracket, enclosure mounting	
20	35216B	2	Bracket, mounting fender - right	
21	60119	6	Washer, .312 flat .875/.070	
22	60404	4	Screw, .312-18x1.250 std hex, G5	

ENCLOSURE ASSEMBLY (2 OF 2)

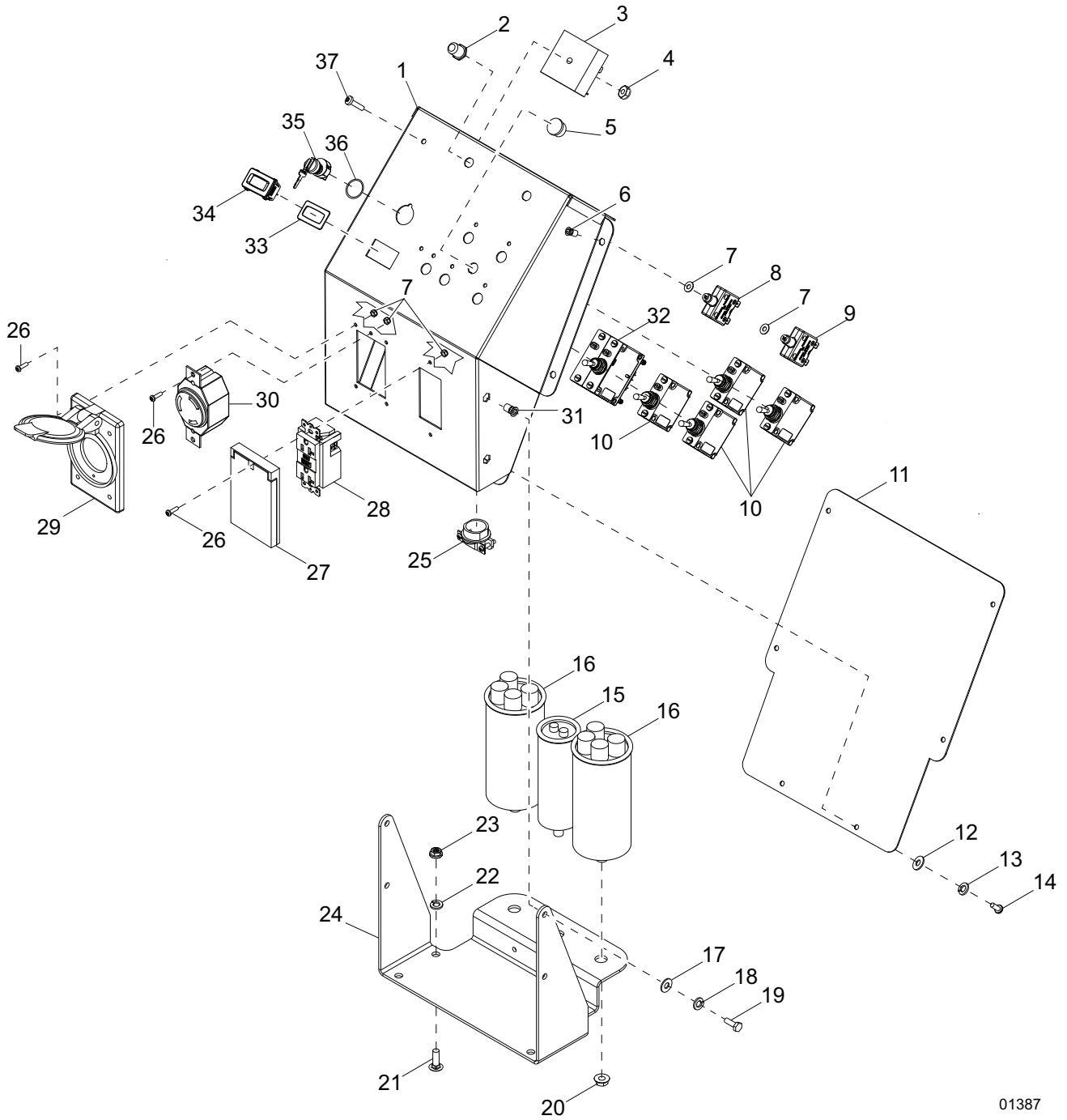


00869

ENCLOSURE ASSEMBLY (2 OF 2)

Item	Part No.	Qty	Description	Notes
1	60694	6	Screw, 8-32x.750 pan phil, SS	
2	60269	6	Washer, #8 flat .433/.036	
3	36960	2	Assembly, tail light	
4	52751R	1	Enclosure, rear clamshell	
5	60270	6	Nut, 8-32 nylock, class 6	
6	60694	6	Screw, 8-32x.750 pan phil, SS	
7	36963	1	Assembly, license plate light	
8	36914	1	Slide, control box cover	
9	37104	1	Cover, sliding control panel	
10	37123	1	Handle, control box cover	
11	70216	1	Gasket, kit handle, push button	
12	35138	1	Handle, push-button padlock	
13	60036	1	Nut, M6-1.00 sflg, G8.8	
14	36964	1	Assembly, controls light	
15	36962	2	Assembly, red side marker	
16	60119	6	Washer, .312 flat .875/.070	
17	60303	6	Nut, .312-18 nylock, G2	
18	35139	1	Latch, rotary	
19	37178B	1	Mount, door latch striker	
20	62001	2	Screw, .312-18x1.250 std hex, G5	
21	60335	1	Screw, M6-1.00x25 std hex, SS	
22	60146	3	Screw, M6-1.00x20 pan phil, G4.8	
23	60243	3	Washer, .250 flat .735/.060	
24	35137	2	Gas shock, 120 lb	
25	35293	2	Ball stud, 10mm, .313-18	
26	60270	4	Nut, 8-32 nylock class 6	
27	37012	1	Weldment, enclosure structure	
28	35290	6	Screw, 10-24x1.0 flat phil, SS	
29	60237	2	Washer, #10 flat .495/.036 ZC	
30	60457	2	Nut, 10-24 nylk G2 ZC	
--	60335	1	Screw, M6-1.00x25 std hex, SS	
--	60375	1	Clamp, tubing - .312 lt duty	

CONTROL BOX ASSEMBLY - MLT6SM, MLT6SK

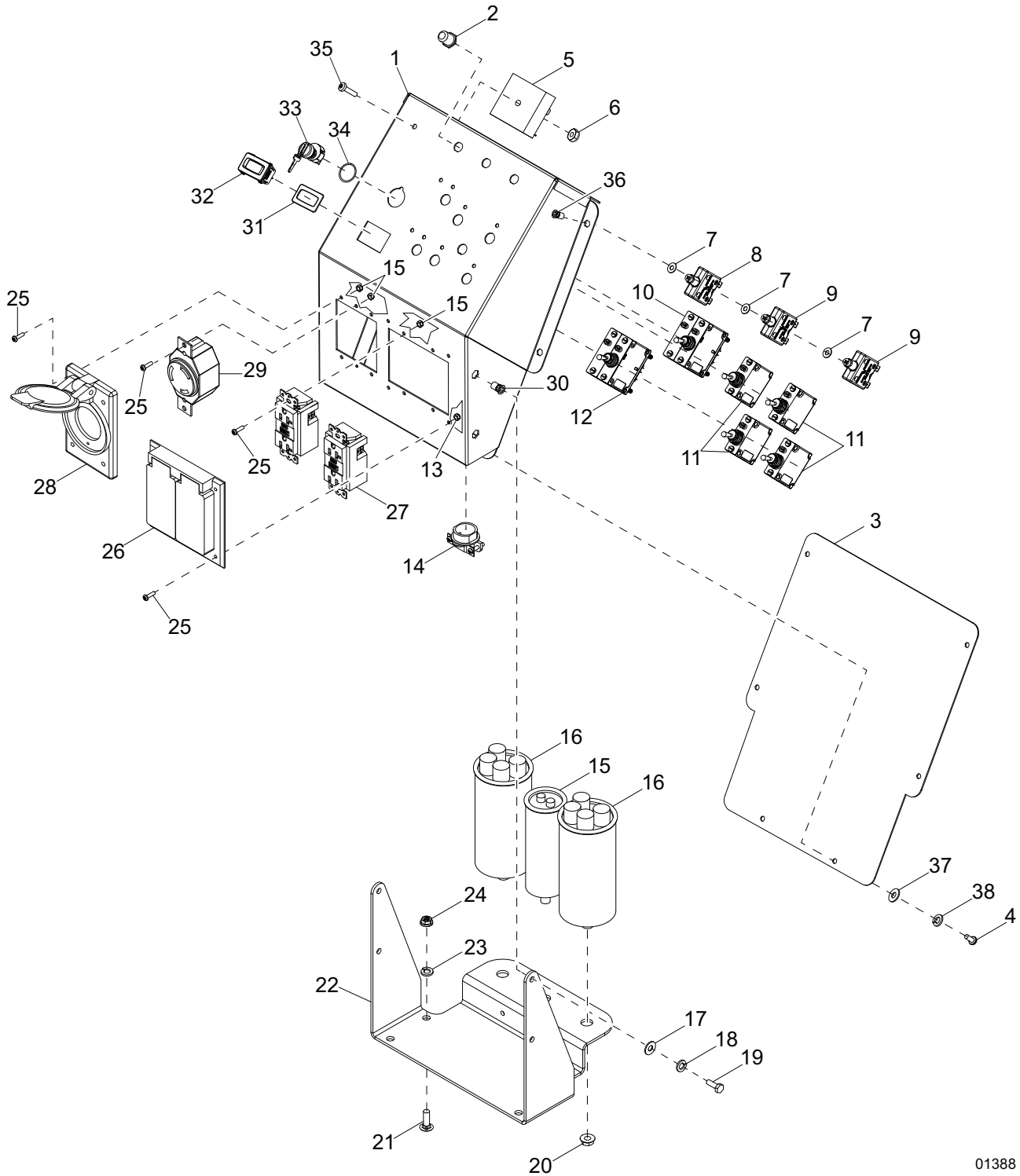


01387

CONTROL BOX ASSEMBLY - MLT6SM, MLT6SK

Item	Part No.	Qty	Description	Notes
1	36884B	1	Control box	
2	36938	2	Boot, push button breaker	
3	14201	1	Relay, 10A SPDT, time delay - 15 sec fixed	
4	60061	5	Nut, 10-32 nylock	
5	65798	1	Plug	
6	62234	6	Insert, threaded #10-32 hex .020-.130 grip	
7	60386	2	Washer, .375 flat .993/.064	
8	36937	1	Breaker, 10A DC	
9	36935	1	Breaker, 15A, 1 pole, 250V	
10	36880	4	Switch, light - 15A	
11	36885B	1	Cover, control panel box	
12	60237	6	Washer, #10 flat .495/0.36	
13	60252	6	Washer, #10 split lock	
14	60277	6	Screw, 10-32x.500 pan phil G2	
15	65959	2	Capacitor, dual 24 μ F sealed stud mount	
16	36980	1	Capacitor, 25 μ F, 5% 440VAC, sealed stud mount	
17	60243	4	Washer, .250 flat .735/.060	
18	60286	4	Washer, .250 split lock	
19	60281	4	Screw, .250-20x.750 std hex, G5	
20	60148	3	Nut, M12-1.75 sflg, G8.8	
21	61066	4	Screw, .312-18x1.0 carr sqr, SS	
22	60119	4	Washer, .312 flat .875/.070	
23	60095	4	Nut, .312-18 sflg	
24	36911B	1	Bracket, control box mounting	
25	14219	1	Strain relief - .75 romex w/nut	
26	62210	6	Screw, 6-32x.50 pan phil, SS	
27	37017	1	Cover receptacle - weather proof, 20A GFCI single	
28	14130	1	Receptacle, 120V/20A GFI	
29	36939	1	Cover, receptacle - weather proof 20/30A twist-lock	
30	14137	1	Receptacle, 240V/30A twist	
31	63231	4	Insert, threaded .250-20 hex .027-.165 grip	
32	36975	1	Breaker, 30A main	
33	36944	1	Gasket, hour meter	
34	36886	1	Meter, hour	
35	36882	1	Switch, sealed key, 4-position	
36	37042	1	O-ring, .75IDx15-16 in. x 3/32 in	
37	63308	1	Screw, 10-32x1.250 pan phil, SS	
--	36320	1	Assy, control panel	

CONTROL BOX ASSEMBLY - MLT8SK

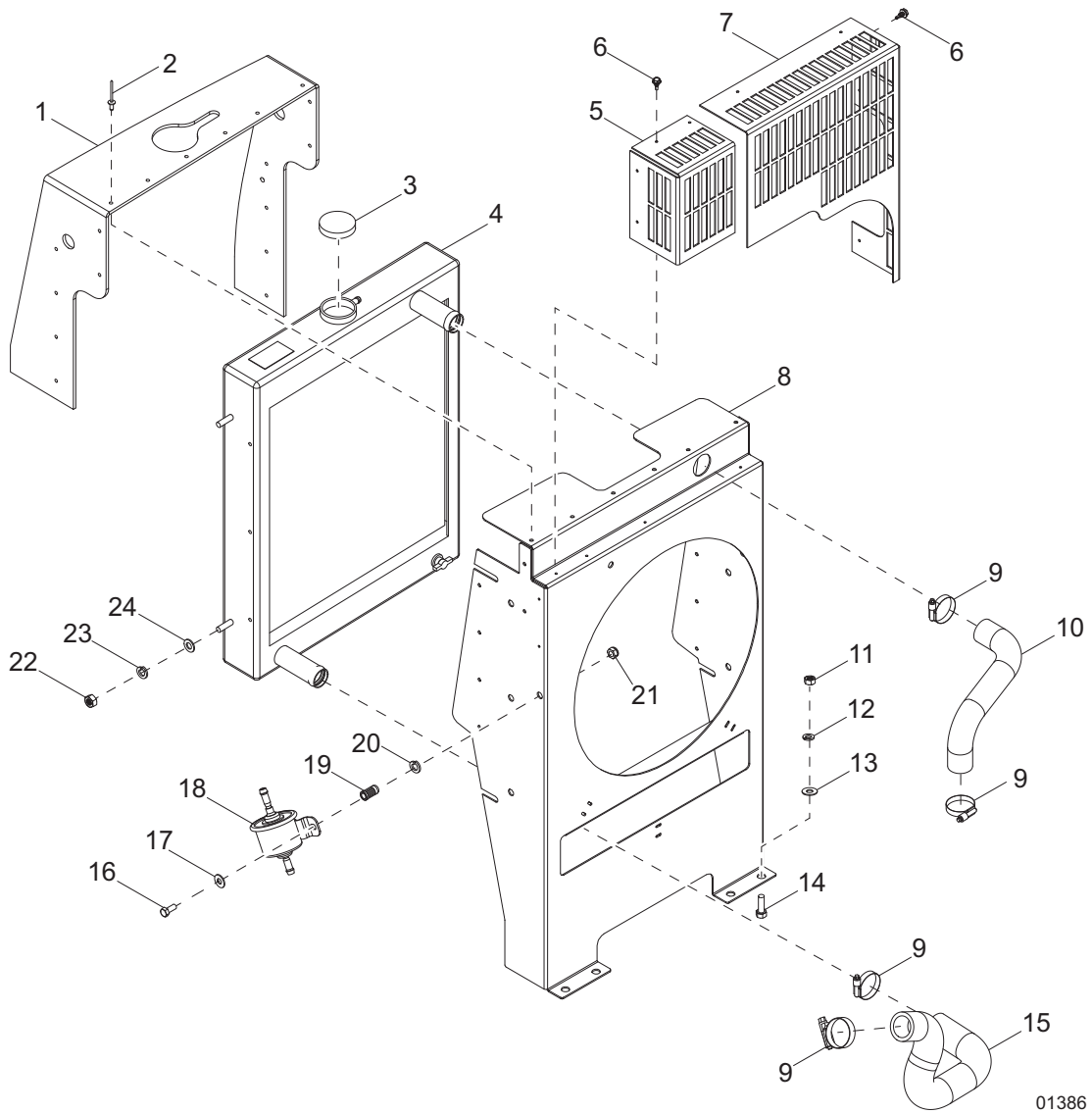


01388

CONTROL BOX ASSEMBLY - MLT8SK

Item	Part No.	Qty	Description	Notes
1	37002B	1	Control box	
2	36938	3	Boot, push button breaker	
3	36885B	1	Cover, control panel box	
4	62254	6	Screw, 10-32x.500 sflg hex 18-8 SS	
5	14201	1	Relay, 10A SPDT, time delay-15 second fixed	
6	60061	2	Nut, 10-32 nylock	
7	60386	3	Washer, .375 flat .993/.064	
8	36937	1	Breaker, 10A DC mech prod	
9	36935	2	Breaker 15A, 1 pole, 250V	
10	37131	1	Breaker, 40A main	
11	36880	4	Switch, light	
12	36975	1	Breaker, 30A main	
13	60728	14	Nut, 6-32 nylock, G5	
14	14219	1	Strain relief- .75 romex w/nut	
15	37177	1	Capacitor, 25 μ F, 6%, 600VAC, sealed stud mount	
16	65959	2	Capacitor, dual 24 μ F sealed stud mount	
17	60243	4	Washer, .250 flat .735/.060	
18	60286	4	Washer, .250 split lock	
19	60281	4	Screw, .250-20x.750 std hex, G5	
20	60148	3	Nut, M12-1.75 sflg, G8.8	
21	61066	4	Screw, .312-18x1.0 carr sqr, SS	
22	36911	1	Bracket, control box mounting	
23	60119	4	Washer, .312 flat .875/.070	
24	60303	4	Nut, .312-18 nylock, G2	
25	62210	14	Screw, 6-32x.50 pan phil, SS	
26	15849	1	Cover receptacle - weather proof 20A GFCI dual	
27	14130	2	Receptacle, 120V/20A GFI	
28	36939	1	Cover, receptacle - weather proof 20/30A twist-lock	
29	14137	1	Receptacle, 240V/30A twist	
30	63231	4	Insert, threaded .250-20 hex .027-.165 grip	
31	36944	1	Gasket, hour meter	
32	36886	1	Meter, hour	
33	36882	1	Switch, sealed key, 4-position	
34	37042	1	O-ring, .75IDx15-16 in. x 3/32 in	
35	63308	1	Screw, 10-32x1.250 pan phil, SS	
36	62234	6	Insert, threaded #10-32 hex .020-.130 grip	
37	60237	6	Washer, #10 flat .495/0.36	
38	60252	6	Washer, #10 split lock	
--	68370	1	Harness, generator to control box	
--	68284	1	Harness, control box DC	

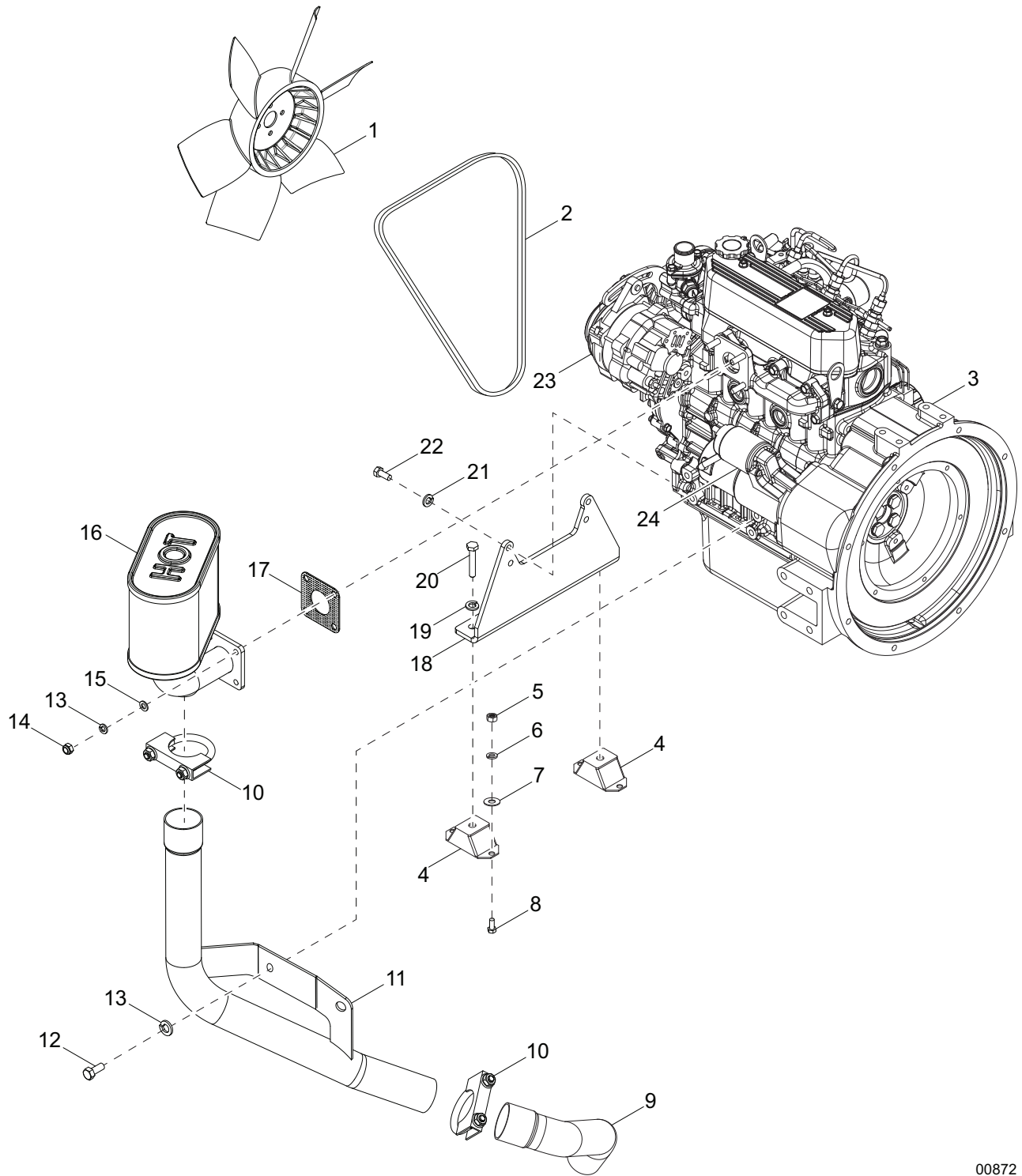
COOLING SYSTEM ASSEMBLY



COOLING SYSTEM ASSEMBLY

Item	Part No.	Qty	Description	Notes
1	36979	1	Seal, rubber, cooling	
2	60195	18	Rivet, .188 dia. x .375 to .500 grip, large flange	
3	19219	1	Cap, radiator pressure small - 14.7 psi	
4	13924	1	Radiator with fan guard	
5	36227B	1	Guard, fan, left	
6	60364	9	Screw, 10-16x5.0 std hex, G2	
7	72161B	1	Guard, fan, right	For Mitsubishi
	36232B	1	Guard, fan, right	For Kubota
8	36226B	1	Fan shroud	For Mitsubishi
	36233B	1	Fan shroud	For Kubota
9	15422	4	Clamp, hose - SAE 020 (.75-1.75)	
10	32383	1	Hose, radiator - upper	For Mitsubishi
	36977	1	Hose, radiator - upper	For Kubota
11	60285	14	Nut .312-18 hex, G2	
12	60271	21	Washer, .312 split lock	
13	60119	24	Washer .312 flat .875/.070	
14	61066	4	Screw, .312-18X1.000 carr sqr 18-8 SS	For Mitsubishi
15	16688	1	Hose, radiator - lower	For Kubota
	12350	1	Hose, radiator - lower	
16	60393	2	Screw, .250-20x1.0 std hex, G5	
17	60243	4	Washer, .250 flat .735/.060	
18	13278	1	Fuel pump, electric	
19	62132	1	Insert, threaded .50-20 splined .027-.165 GRP	
20	60286	2	Washer, .25 split lock ZC	
21	60144	2	Nut 250-20 nylock, G5	
22	60032	4	Nut, M8-1.25 hex, G8.8	
23	60029	4	Washer, M8 split lock	
24	60166	4	Washer, M8 flat	

ENGINE ASSEMBLY - MITSUBISHI (1 OF 2)



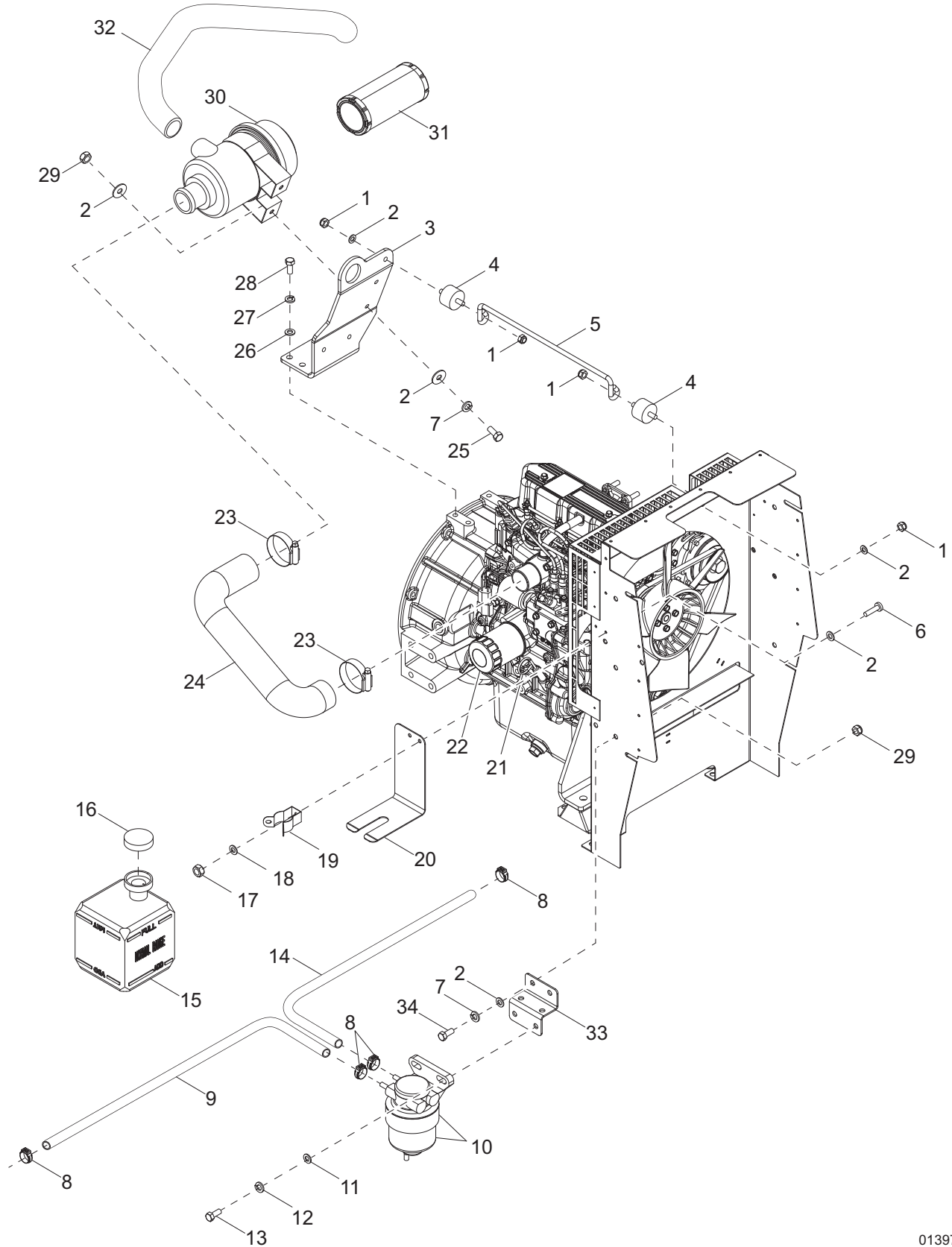
00872

ENGINE ASSEMBLY - MITSUBISHI (1 OF 2)

Item	Part No.	Qty	Description	Notes
1	16742	1	Fan, engine	
2	16692	1	V-belt, alternator	
3	37164	1	Engine, Mitsubishi - L3E Tier IV	
4	34052	2	Isolator, rubber - 1.50x1.0, 5/16-18 studs	
5	60285	4	Nut .312-18 hex, G2	
6	60271	4	Washer, .312 split lock	
7	60119	4	Washer .312 flat .875/.070	
8	61066	4	Screw, .312-18x1.0 carr sqr, SS	
9	17121	1	Exhaust, extension	
10	68082	1	Clamp, muffler - 1.63	
11	43200	1	Weldment, exhaust	
12	60495	2	Screw, M10-1.25x16 std hex, G8.8	
13	60029	4	Washer, M8 split lock	
14	60032	4	Nut, M8-1.25 hex, G8.8	
15	60166	4	Washer, M8 flat	
16	39675	1	Muffler	
17	11042	1	Gasket, muffler	
18	37030B	1	Bracket, engine mount	
19	60702	2	Washer, .500 split lock, SS	
20	60275	2	Screw, .500-13x1.0 std hex, G5	
21	60026	4	Washer, M10 split lock	
22	60422	4	Screw, M10-1.25x25 std hex, G8.8	
23	16743	1	Alternator	
24	70232	1	Starter	

Note: Engine and generator parts used in all Generac Mobile Products, LLC equipment carry the Original Equipment Manufacturer (OEM) warranty unless otherwise stated. OEM warranty parts must be purchased through an OEM dealer. Please contact Generac Mobile Products, LLC with questions.

ENGINE ASSEMBLY - MITSUBISHI (2 OF 2)



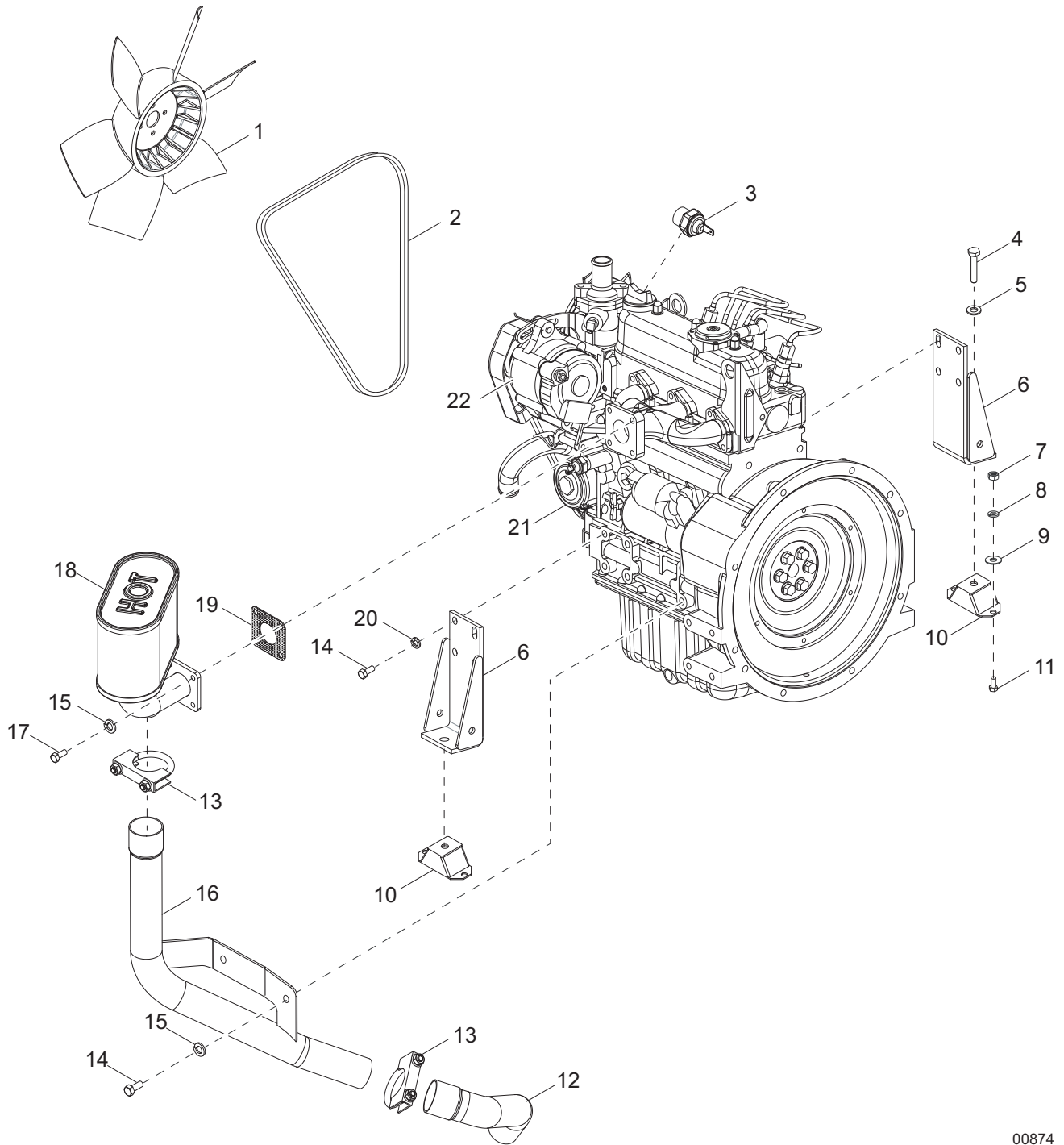
01397

ENGINE ASSEMBLY - MITSUBISHI (2 OF 2)

Item	Part No.	Qty	Description	Notes
1	62079	2	Nut, .312-18 nylock jam	
2	60119	26	Washer, .312 flat .875/.07	
3	17977B	1	Bracket, air cleaner	
4	34052	2	Isolator, rubber - 1.50x1.00, 5/16-18 studs	
5	36989	1	Rod, radiator stay	
6	60694	4	Screw, 8-32x.750 pan phil, SS	
7	60271	20	Washer, .312 split lock	
8	60777	4	Clamp, hose - .312 fuel hose crimp style	
9	50018	1.5 ft	Hose, fuel - .312 ID, 50 psi SAE 30R7	
10	17641	1	Fuel filter head	Includes 17647
	17647	1	Element, fuel filter	
11	60243	5	Washer, .250 flat .735/.060	
12	60286	5	Washer, .250 split lock	
13	60414	2	Screw, .250-20X1.50 std hex, G5	
14	50018	2.8 ft	Hose, fuel - .312 ID, 50 psi SAE 30R7	
15	20287	1	Jug, overflow 2 qt. (.5 gal)	
16	19714	1	Cap, overflow jug	
17	60061	2	Nut, 10-32 nylock	
18	60696	2	Washer, .250 flat .625/060, SS	
19	19726	1	Clamp, overflow jug	
20	22419B	1	Bracket, support overflow jug .5 gallon	
21	11148	1	Dipstick, oil	
22	70124	1	Filter, oil	
23	60316	2	Clamp, hose - SAE 032 (1.56-2.50)	
24	16589	1	Hose, air cleaner	
25	60028	2	Screw, .312-18x1.0 std hex, G5	
26	60027	4	Washer, M10 flat	
27	60026	4	Washer, M10 split lock	
28	60422	4	Screw, M10-1.25x25 std hex, G8.8	
29	60285	2	Nut, .312-18 hex, G2	
30	34066	1	Filter, air, w/bracket	
31	16444	1	Element, air filter	
32	10434	1	Hose, air intake	
33	36234B	1	Bracket, fuel filter	
34	62001	2	Screw, .312-18X 1.25 std hex G5	
--	65684	1	Harness, lead - Mitsubishi	
--	37034	1	Harness, engine	
--	11691	1	Bracket, lower radiator hose guard - Mitsubishi	
--	11147	1	Oil cap	
--	70232	1	Starter	
--	16745	1	Thermostat	
--	12214	1	Thermostat gasket	
--	19177	1	Hose, fuel pick-up, .312 x 18.00	
--	52649	1	Hose, Fuel .188 ID 50 psi SAE 30R7 - 3	
--	52650	1	Hose, Fuel .188 ID 50 psi SAE 30R7 -15.5	
--	13298	1	Hose, Fuel .312 ID 50 psi SAE 30R7 - 30	

Note: Engine and generator parts used in all Generac Mobile Products, LLC equipment carry the Original Equipment Manufacturer (OEM) warranty unless otherwise stated. OEM warranty parts must be purchased through an OEM dealer. Please contact Generac Mobile Products, LLC with questions.

ENGINE ASSEMBLY - KUBOTA (1 OF 2)



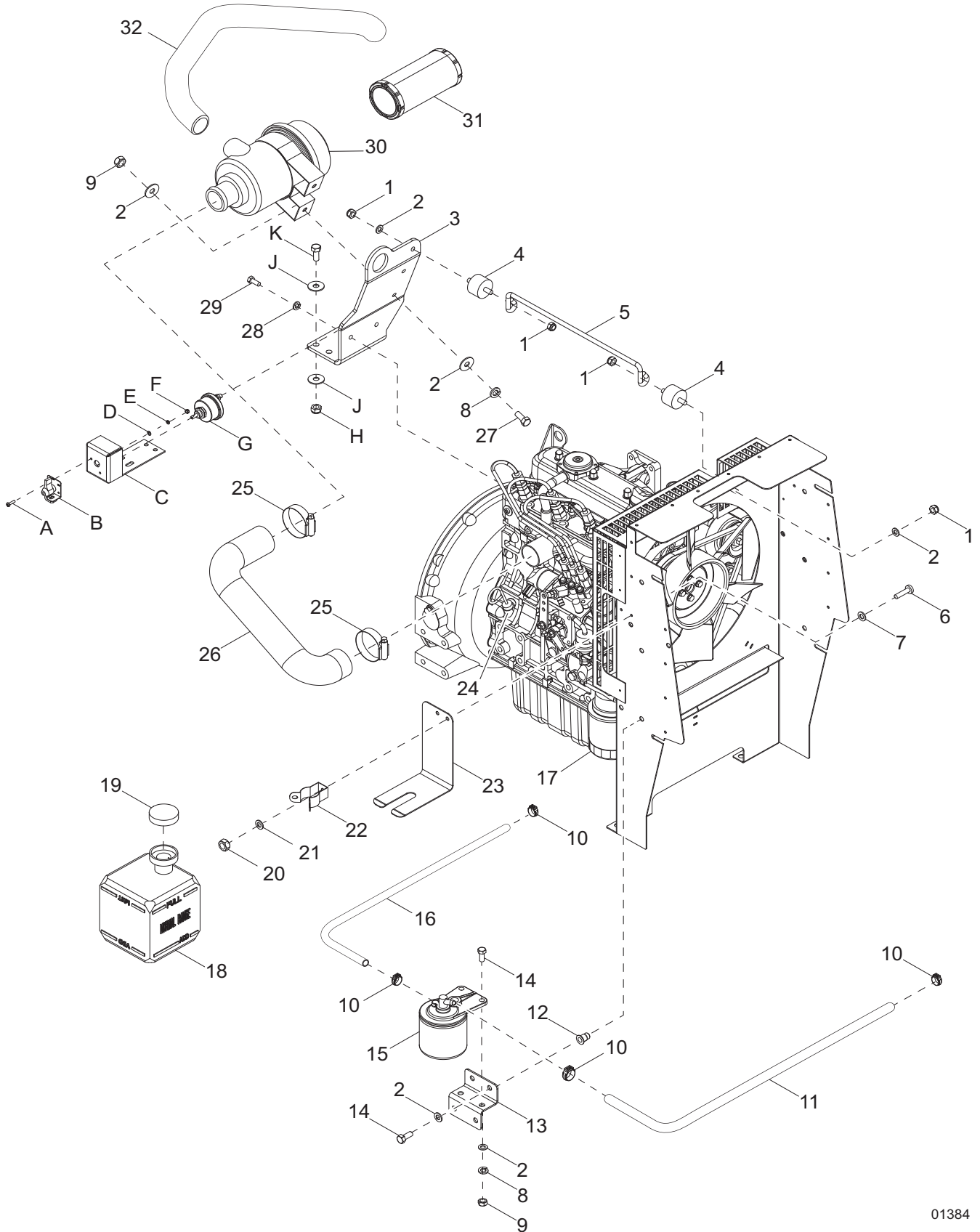
00874

ENGINE ASSEMBLY - KUBOTA (1 OF 2)

Item	Part No.	Qty	Description	Notes
1	15495	1	Fan, pusher	
2	11628	1	V-belt, Kubota	
3	14099	1	Switch, coolant temperature	
4	60275	4	Screw, .500-13x1.0 std hex, G5	
5	60702	4	Washer, .500 split lock, SS	
6	12338B	2	Weldment, engine mount - Kubota D905	
7	60285	4	Nut, .312-18 hex, G2	
8	60271	4	Washer, .312 split lock	
9	60119	4	Washer, .312 flat .875/.070	
10	15241	2	Isolator, rubber 80-200 lbs., 2" wide	
11	61066	4	Screw, .312-18x1.0 carr sqr, SS	
12	17121	1	Exhaust, extension	
13	68082	1	Clamp, muffler - 1.63	
14	60422	10	Screw, M10-1.25x25 std hex, G8.8	
15	60029	6	Washer, M8 split lock	
16	43200	1	Weldment, exhaust	
17	63168	4	Screw, M8-1.25x30 std hex, 10.9	
18	17949	1	Muffler	
19	11042	1	Gasket, muffler	
20	60026	8	Washer, M10 split lock	
21	13310	1	Engine, Kubota D1005-E3BG1-MGM-1	MLT6K
	13281	1	Engine, Kubota D1105 BG	MLT8K
22	12486	1	Alternator	
--	60649	1	Clamp, tubing - .750 heavy duty	
--	30582	1	Starter, Kubota D1005	MLT6K
--	15298	1	Starter, Kubota D1105	MLT8K

Note: Engine and generator parts used in all Generac Mobile Products, LLC equipment carry the Original Equipment Manufacturer (OEM) warranty unless otherwise stated. OEM warranty parts must be purchased through an OEM dealer. Please contact Generac Mobile Products, LLC with questions.

ENGINE ASSEMBLY - KUBOTA (2 OF 2)



01384

ENGINE ASSEMBLY - KUBOTA (2 OF 2)

Item	Part No.	Qty	Description	Notes
1	62079	9	Nut, .312-18 nylock jam	
2	60119	24	Washer, .312 flat .875/.070	
3	17977B	1	Bracket, air cleaner	
4	34052	2	Isolator, rubber 1.50x1.0, 5/16-18 studs	
5	36989	1	Rod, radiator stay	
6	61180	2	Screw, 10-32x.750 pan phil, SS	
7	60067	4	Washer, #10 flat .435/.060, SS	
8	60271	18	Washer, .312 split lock	
9	60285	16	Nut, .312-18 hex, G2	
10	60777	4	Clamp, hose - .312 fuel hose crimp style	
11	19117	1	Hose, fuel - .312 ID 50 psi SAE 30R7	
12	62132	2	Inset, threaded .250-20 splined .027-.165 grip	
13	36234	1	Bracket, fuel system	
14	62001	4	Screw, .312-18x1.250 std hex, G5	
15	13481	1	Assembly, fuel filter	includes 13515
	13515	1	Element, fuel filter	
16	16232	1	Hose, fuel - .312 ID 50 psi SAE 30R7	
17	10775	1	Filter, oil	
18	20287	1	Jug, overflow 2 qt. (.5 gal)	
19	19714	1	Cap, overflow jug	
20	60061	9	Nut, M8-1.25 hex, G8.8	
21	60067	17	Washer, .312 flat .875/.070	
22	19726	1	Clamp, overflow bottle	
23	22419B	1	Bracket, support overflow jug .5 gallon	
24	12484	1	Cap, oil	
25	60316	2	Clamp, hose - SAE 032 (1.56-2.50)	
26	16589	1	Hose, air cleaner	
27	60028	2	Screw, .312-18x1.0 std hex, G5	
28	60026	2	Washer, M10 split lock	
29	60422	2	Screw, M10-1.25x25 std hex, G8.8	
30	34066	1	Filter, air, w bracket	
31	16444	1	Element, air filter	
32	14034	1	Hose, air intake	
--	19177	1	Hose, fuel pick-up, .312 x 18.00	

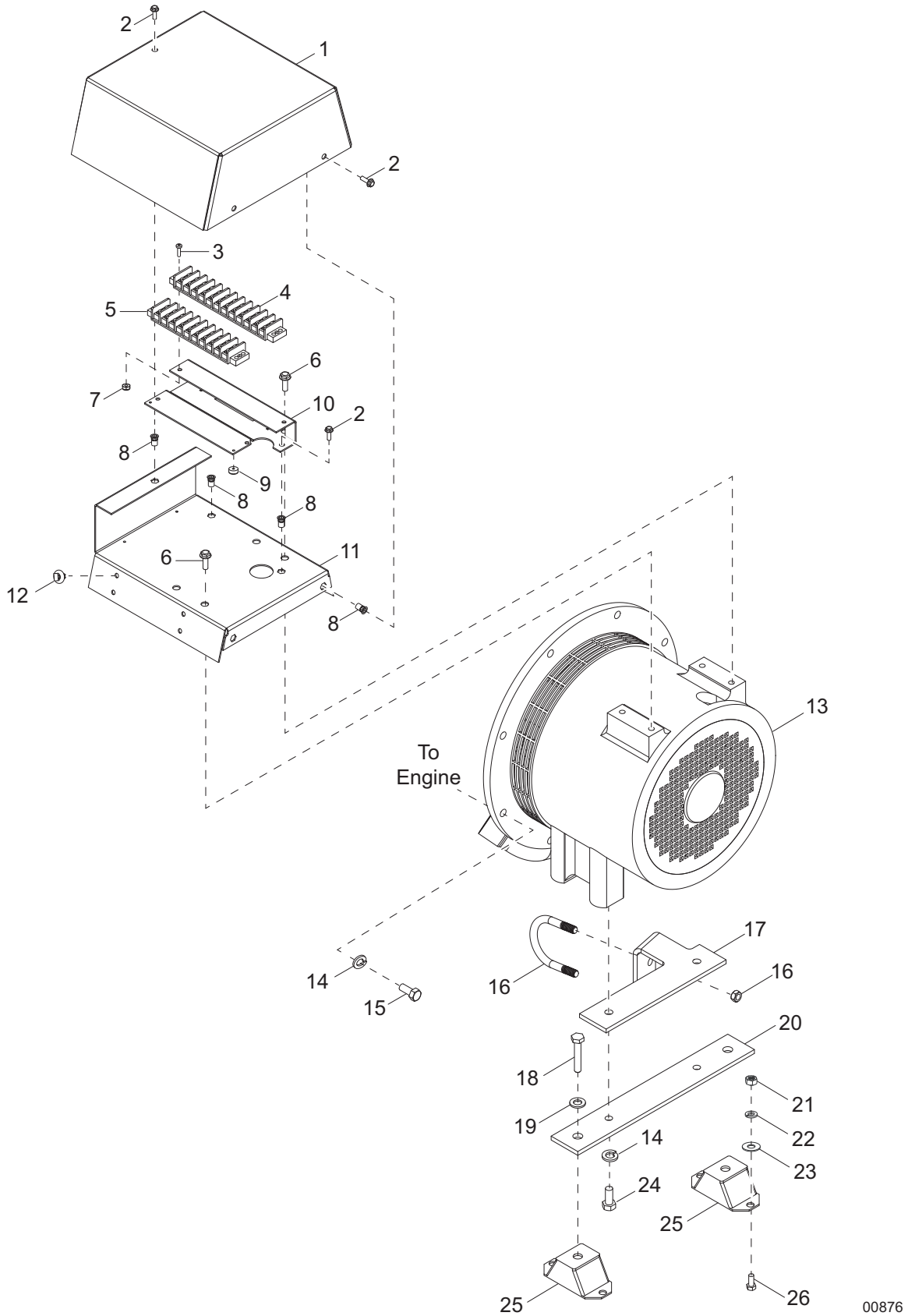
OPTIONAL FEATURES

Battery Disconnect:

A	60277	2	Screw, 10-32x .500 pan phil G2
B	65499	1	Switch lockout lever kit
C	35737B	1	Bracket, battery disconnect
D	60237	2	Washer, #10-32x .500 pan phil
E	60252	2	Washer, #10 split lock
F	60061	2	Nut, 10-32 nylock
G	65498	1	Switch, disconnect
H	60342	4	Nut, M8 1.25 hex 18.8SS
J	60444	8	Washer, M8 flat 18.8 SS
K	63168	4	Screw, M8 1.25x 30 std hex 10.9ZC
--	25075	1	Cable, battery - 24 in 4 ga - red w/boot, .375 lug

Note: Engine and generator parts used in all Generac Mobile Products, LLC equipment carry the Original Equipment Manufacturer (OEM) warranty unless otherwise stated. OEM warranty parts must be purchased through an OEM dealer. Please contact Generac Mobile Products, LLC with questions.

GENERATOR ASSEMBLY



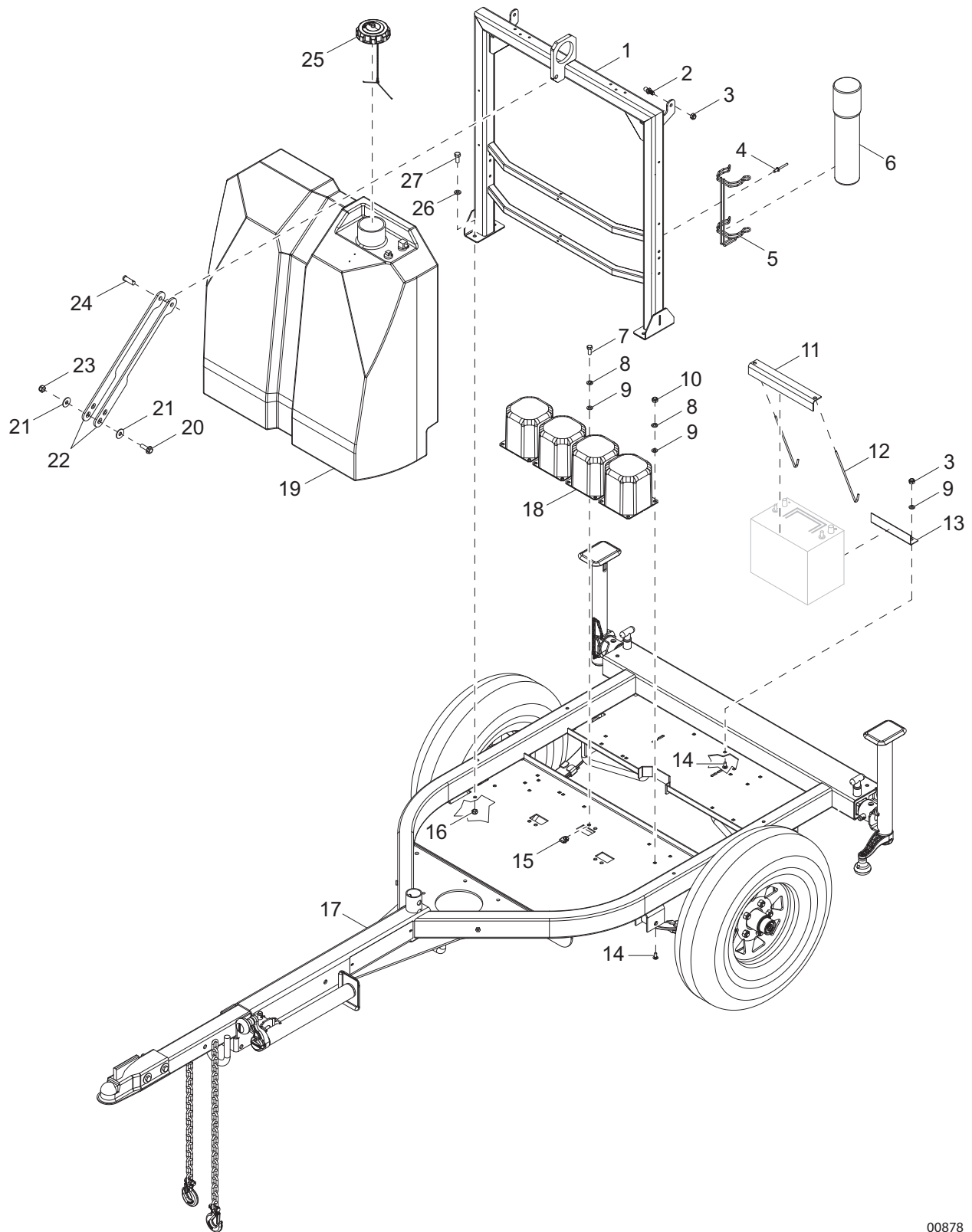
00876

GENERATOR ASSEMBLY

Item	Part No.	Qty	Description	Notes
1	17994B	1	Cover, generator, Marathon	
2	60175	5	Screw, .250-20x.500 sflg hex, G5	
3	60062	4	Screw, 10-32x.750 pan phil, G2	
4	14139	1	Block terminal - 12 pos	
5	14203	1	Block terminal - 10 pos	
6	60114	4	Screw, M8-1.25x20 sflg hex	
7	60061	4	Nut, 10-32 nylock	
8	63231	9	Insert, threaded .250-20 hex .027-.165 grip	
9	15215	2	Rubber bumper	
10	36942B	1	Bracket, terminal strip	
11	36941B	1	Plate, electric junction	
12	66685	8	Mount cable tie, fir tree, .25-.28 dia,.031-.276 grip	
13	16556	1	Generator, Marathon, 6kW, 60Hz, cap	For MLT6SK-M
	10486	1	Generator, Marathon, 8kW, 60Hz, cap	For MLT8SK
14	60206	8	Washer, .375 split lock	
15	60352	8	Screw, .375-16x1.250 std hex, G5	
16	61235	1	Bolt, U - .312-18x2.688x2.063	
17	68202B	1	Plate, gen spacer	
18	60275	2	Screw, .500-13x1.0 std hex, G5	
19	60702	2	Washer, .500 split lock, SS	
20	--	1	Bracket, generator mounting	Incl.with Item 13
21	60285	4	Nut, .312-18 hex, G2	
22	60271	4	Washer, .312 split lock	
23	60119	4	Washer, .312 flat .875/.070	
24	60352	2	Screw, .375-16x1.250 std hex, G5	
25	15241	2	Isolator, rubber - 80-200 lb	
26	61066	4	Screw, .312-18x1.0 carr sqr, SS	
--	60168	6	Screw, .312-18 x .750 std hex, G5	For flex plate mount
--	60166	18	Washer, M8 flat DIN 125 hardened	3 each w/60168

Note: Engine and generator parts used in all Generac Mobile Products, LLC equipment carry the Original Equipment Manufacturer (OEM) warranty unless otherwise stated. OEM warranty parts must be purchased through an OEM dealer. Please contact Generac Mobile Products, LLC with questions.

COMPONENTS TO TRAILER ASSEMBLY

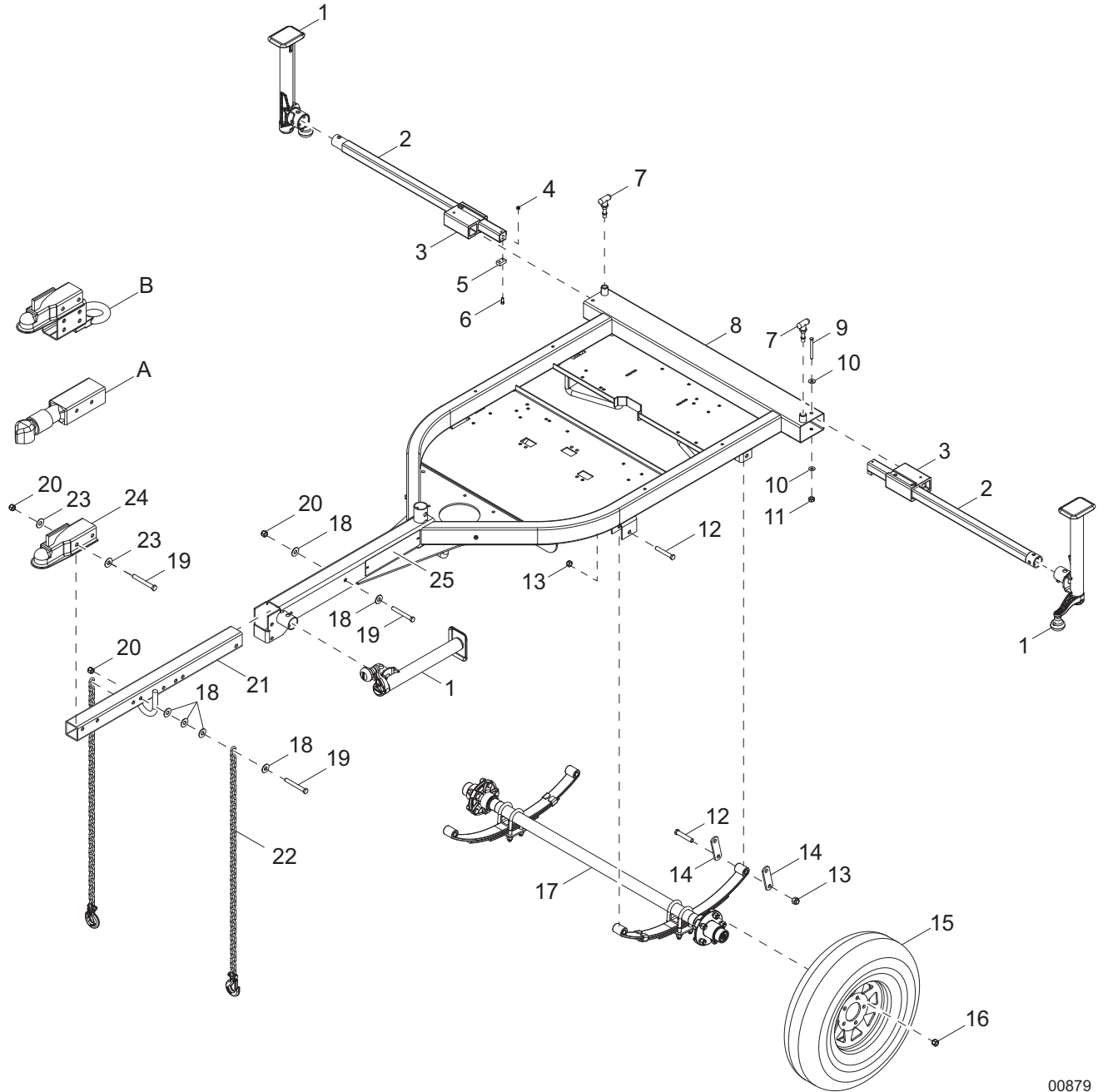


00878

COMPONENTS TO TRAILER ASSEMBLY

Item	Part No.	Qty	Description	Notes
1	28341B	1	Weldment, lift support	
2	35293	2	Ball stud, 10mm, .313-18	
3	60303	2	Nut, .312-18 nylock, G2	
4	60268	2	Rivet, .188 dia. x .375 to .500 grip	
5	11222	1	Bracket, manual holder	
6	11121	1	Manual holder tube, black 14 in	
7	60028	6	Screw, .312-18x1.0 std hex, G5	
8	60271	8	Washer, .312 split lock	
9	60119	8	Washer, .312 flat .875/.07	
10	60285	2	Nut, .312-18 hex, G2	
11	14682	1	Angle, battery hold-down	
12	60820	2	Bolt, J - .250-20x9.0	
13	17992B	1	Bracket, battery stop	
14	61066	2	Screw, .312-18X1.0 carr sqr, SS	
15	62086	6	Nut, .312-18 U-clip - short type	
16	60358	4	Nut, .375-16 nylock, G5	
17	<i>Page 38</i>	1	Assembly, trailer	
18	10656	4	Assembly, transformer - can and base - 60Hz-MH-5.5"-side	
19	34758	1	Tank, fuel - 42 gal	
20	60388	2	Screw, .500-13x1.50 std hex, G5	
21	60309	4	Washer, .500 flat 1.060/.090	
22	39660B	2	Bar, chassis support	
23	62221	2	Nut, .500-13 nylock, G5	
24	63325	1	Pin, clevis - .500 dia. x 1.063 UL, ZP	
25	16326	1	Cap, fuel, 3.5 dia., diesel, vent w/tether	
26	60386	4	Washer, .375 flat .993-.064	
27	60352	4	Screw, .375-16x1.250 std hex, G5	
--	70119	1	Hose, fuel - .312 ID, 50 psi, SAE 30R7	
--	60777	2	Clamp, hose - .312 fuel hose, crimp style	
--	52651	1	Hose, fuel - .188, 50 psi, SAE 30R7	
--	60778	2	Clamp, hose - .188 fuel hose, crimp style	

TRAILER ASSEMBLY



00879

TRAILER ASSEMBLY

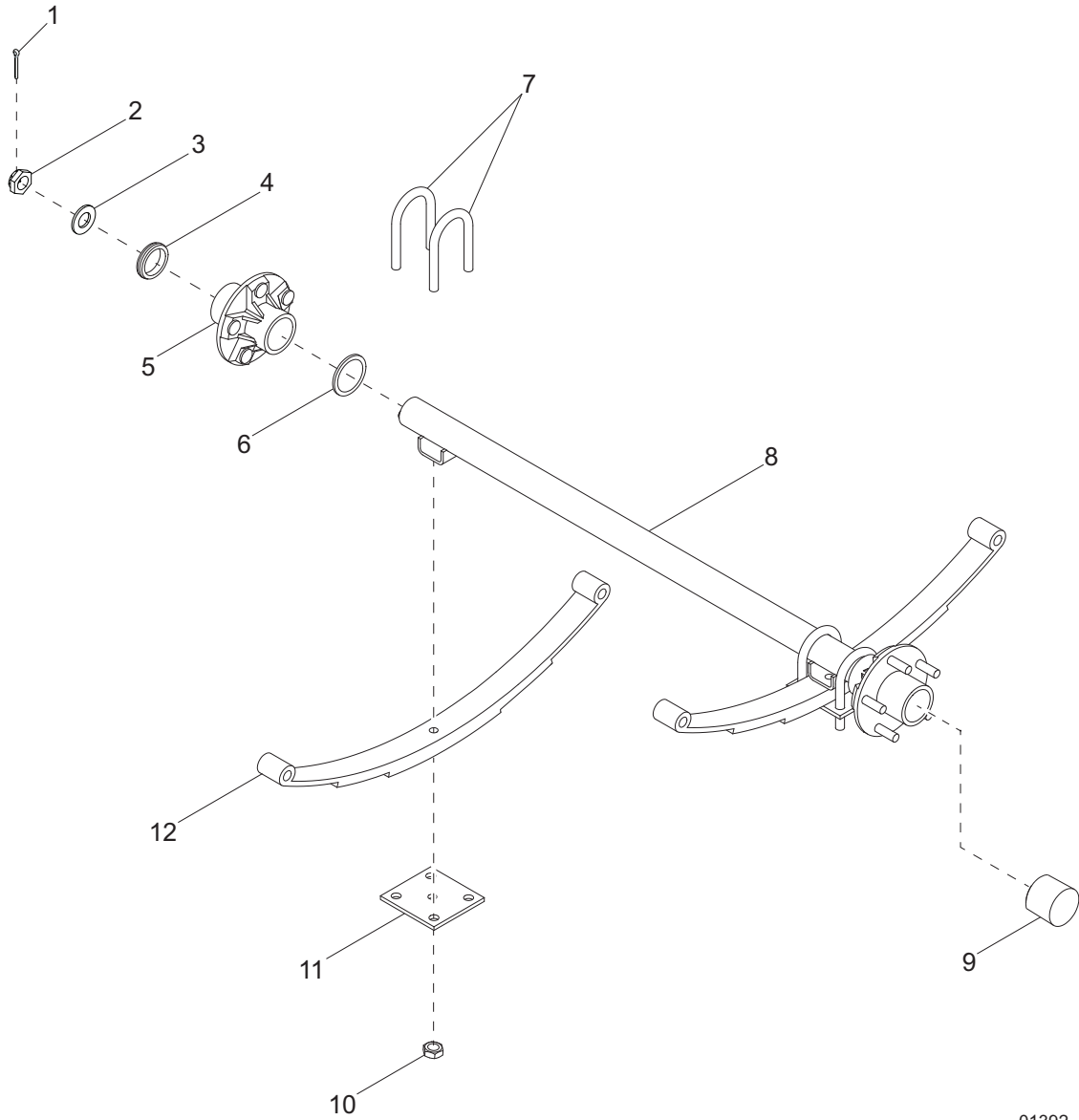
Item	Part No.	Qty	Description	Notes
1	36868	3	Jack, top wind - 1200 lb, tube mounted	
2	36888ZY	2	Weldment, outrigger tube	
3	36869	2	Guide block (molded) - outrigger	
4	60144	4	Nut, .250-20 nylock, G5	
5	72128	2	Pad/stop, wear - outrigger	
6	73196	4	Screw, .250-20 x 2.25 socket head	
7	36890	3	Spring pin, handle	
8	17017B	1	Weldment, lt chassis	
9	60404	2	Screw, .312-18x4.0 std hex, G5	
10	60119	4	Washer, .312 flat .875/.070	
11	60095	4	Nut, .312-18, sflg	
12	60503	6	Screw, shackle, .562-18x3.0 std hex, G5	
13	60504	6	Nut, .562-18 lock hex, G5	
14	19637	4	Plate, shackle bracket - 3.125"	
15	15976	2	Wheel, ST175/8013 - 1360 lb	
16	60096	10	Nut, .500-20 lug, G5	
17	<i>Page 40</i>	1	Axle, 2200lb 47TC 35SC	
18	60416	8	Washer, .500 flat 1.375/.090	
19	50215	8	Screw, .500-13x4.0 std hex, G5	
20	62221	8	Nut, .500-13 nylock, G5	
21	17969B	1	Weldment, tilt tongue	
22	23367	2	Chain, safety - 7800 lbs rated	
23	60309	2	Washer, .50 flat 1.060/.090	
24	16830	1	Coupler, 2.00 ball/2.50 channel	
25	30138	1	Plate, VIN/trailer tag	
--	68348	1	Harness, trailer wiring, tandem tow	MLT6S/8S
--	68324	1	Harness, trailer enclosure front	MLT6S
--	68325	1	Harness, trailer enclosure rear	MLT6S
--	68326	1	Assy, harness extension loomed	MLT6S

OPTIONAL FEATURES

Hitch Options

A	13003B	1	Coupler, 2.00 ball/3.00 channel
B	34792ZC	1	Weldment, combo hitch - 2.50 tongue
--	65441	1	Adapter, pig-tail trailer light 4 pin to 12 pin
--	65465	1	Adapter, trailer wiring - flat 4 to round 7 blade
--	65464	1	Adapter, trailer wiring - flat 4 to round 7 pin
--	65463	1	Adapter, trailer wiring - flat 4 to round 6 pin
--	65548	1	Adapter, 4 pin flat to 4 pin flat x 12.00

AXLE ASSEMBLY



01392

AXLE ASSEMBLY

Item	Part No.	Qty	Description	Notes
--	34760	1	Axle, 2200 lb 47TC 35SC	
1	70157	2	Pin, cotter	
2	70156	2	Washer, axle	
3	70155	2	Nut, castle	
4	70151	2	Grommet	
5	70152	2	Hub, 5 bolt w/studs	
6	70154	2	Seal, 1.5 in	
7	70148	4	U-bolt	
8	70145	1	Tube weldment, axle	
9	70150	2	Dust cap	
10	70149	8	Nut, lock	
11	70147	2	Pad, spring	
12	70146	2	Spring, axle, 3 leaf. dbl eye	
--	70153	2	Grease zerk	

RECOMMENDED SPARE PARTS LIST - COMMON

ENGINE

Cap, fuel tank with lanyard	16326
Filter, air (element).....	16444
Pump, fuel	13278

ELECTRICAL

Breaker, 10A, 240V, 1 pole, push button	36937
Breaker, 15A, 250V, 1 pole	36880
Breaker, 15A, 120V, 1 pole, push button, 8kW	36935
Breaker, 30A, 250A, 2 pole, 6kW	36975
Breaker, 40A, 250V, 2 pole, 8kW	37131
Capacitor, 24 μ F, dual	65959
Capacitor, 25 μ F, 440V, 6kW	36980
Capacitor, 25 μ F, 6% 600VAC	37177
Connector, 2 pos (qty - 4)	66100
Connector, 3 pos (qty - 2)	66101
Connector, 5 pos (qty - 1)	66102
Gasket, hour meter	36944
Gauge, hour meter	36886
Key (set of two).....	37182
Receptacle, 120V/20A GFI.....	14130
Receptacle, 240V/30A twist.....	14137
Relay, 10A SPDT, 15 second time delay	14201
Switch, key	36882

ENCLOSURE

Gas shock.....	35137
----------------	-------

MAST

Assembly, light fixture, hard wired	13311
Bulb	11391
Cable, 79.75 in	31248
Cable, 78 in	31277
Cable, 144 in	31247
Coil cord	39650
Guide block.....	36910
Transformer (incl. cover).....	10656
Winch, manual, includes dual handle	72127

JACKS

Jack, top wind, 2000 lb	36868
-------------------------------	-------

RECOMMENDED SPARE PARTS LIST - KUBOTA ONLY

ENGINE

Belt, V, Kubota	11628
Filter, fuel element, Kubota	13515
Filter, oil, Kubota D1005/D1105	10775
Hose, lower radiator, Kubota	12350
Hose, upper radiator Kubota	36977
Plug, glow, Kubota (start SN 489916)	13238
Sender, coolant temp	12873
Solenoid, fuel shutdown (2 wire)	13018
Switch, coolant temperature - Kubota D850	14099
Switch, oil pressure, Kubota D905	15375

MAINTENANCE KITS

Filter, service kit - 250 hr, Kubota D1005/D1105	SK151
Service kit - 2000 hr, Kubota D1005/D1105.....	SK152

RECOMMENDED SPARE PARTS LIST - MITSUBISHI ONLY

ENGINE

Belt	10386
Filter, fuel, Mitsubishi	17647
Filter, oil, Mitsubishi	70124
Hose, radiator - lower	16688
Hose, radiator - upper	32383
Plug, glow	16693
Sender, coolant temp	12873
Solenoid, fuel shutdown	16683
Starter	70232
Switch, coolant temperature	16678
Switch, oil pressure	16677

MAINTENANCE KITS

Filter, service kit, 750 hr, Mitsubishi MLT6SM, 8SM	SK334
Filter, service kit, 3000 hr, Mitsubishi MLT6SM, 8SM	SK335

